

**LEGEND**

- 1 Hudson River Miles
- Potential Mattress (Rock or Stiff Soils)
- Potential Mattress (Utility Crossings)
- CHPE Route Mileposts
- Proposed CHPE Submarine Route HVDC
- Proposed CHPE Terrestrial Route HVDC
- Cofferdam
- Significant Coastal Fish and Wildlife Habitat
- Exclusion Zones (NYSDEC) (4) Zone Number
- Contamination Site
- NMFS Identified Atlantic Sturgeon Habitat
- Submerged Aquatic Veg: Valsineria (NYSDEC)
- Submerged Aquatic Veg: Trappa (NYSDEC)

**Sediment Type - NYSDEC Hudson River Estuary Program**

- gravel
- gravelly mud
- gravelly sand
- mud
- muddy gravel
- muddy sand
- sand
- sandy gravel
- sandy mud

- State Boundary
- County Boundary
- Town Boundary

0 750  
Feet

  
**Transmission**  
Corporation, Inc.

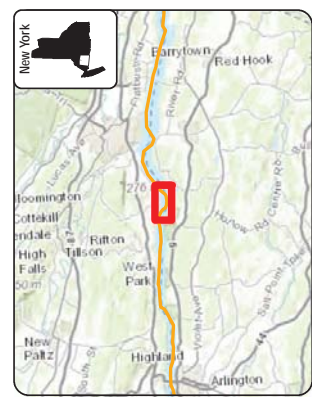
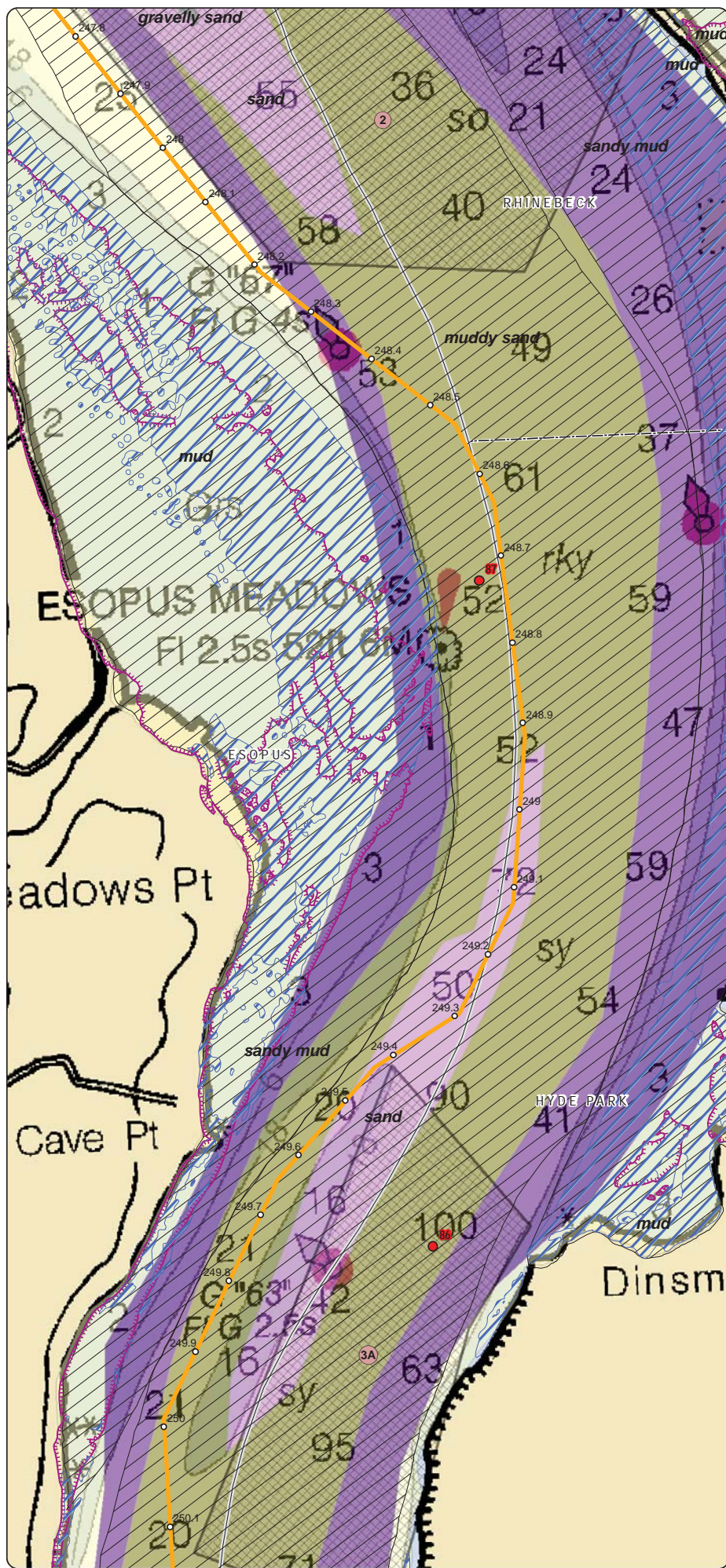
**Champlain Hudson Power Express Project**  
 Champlain Hudson Power Express Inc.

---

**Hudson River Project Route**  
 Sheet 9 of 43

---

Created: 6/18/2014  
 by:   & 



**LEGEND**

- 1 Hudson River Miles
- Potential Mattress (Rock or Stiff Soils)
- Potential Mattress (Utility Crossings)
- 1 CHPE Route Mileposts
- Proposed CHPE Submarine Route HVDC
- Proposed CHPE Terrestrial Route HVDC
- Cofferdam
- Significant Coastal Fish and Wildlife Habitat
- Exclusion Zones (NYSDEC) (4) Zone Number
- Contamination Site
- NMFS Identified Atlantic Sturgeon Habitat
- Submerged Aquatic Veg: Valsineria (NYSDEC)
- Submerged Aquatic Veg: Trappa (NYSDEC)

**Sediment Type - NYSDEC Hudson River Estuary Program**

- gravel
- gravelly mud
- gravelly sand
- mud
- muddy gravel
- muddy sand
- sand
- sandy gravel
- sandy mud
- State Boundary
- County Boundary
- Town Boundary

**Transmission**  
Construction Inc.

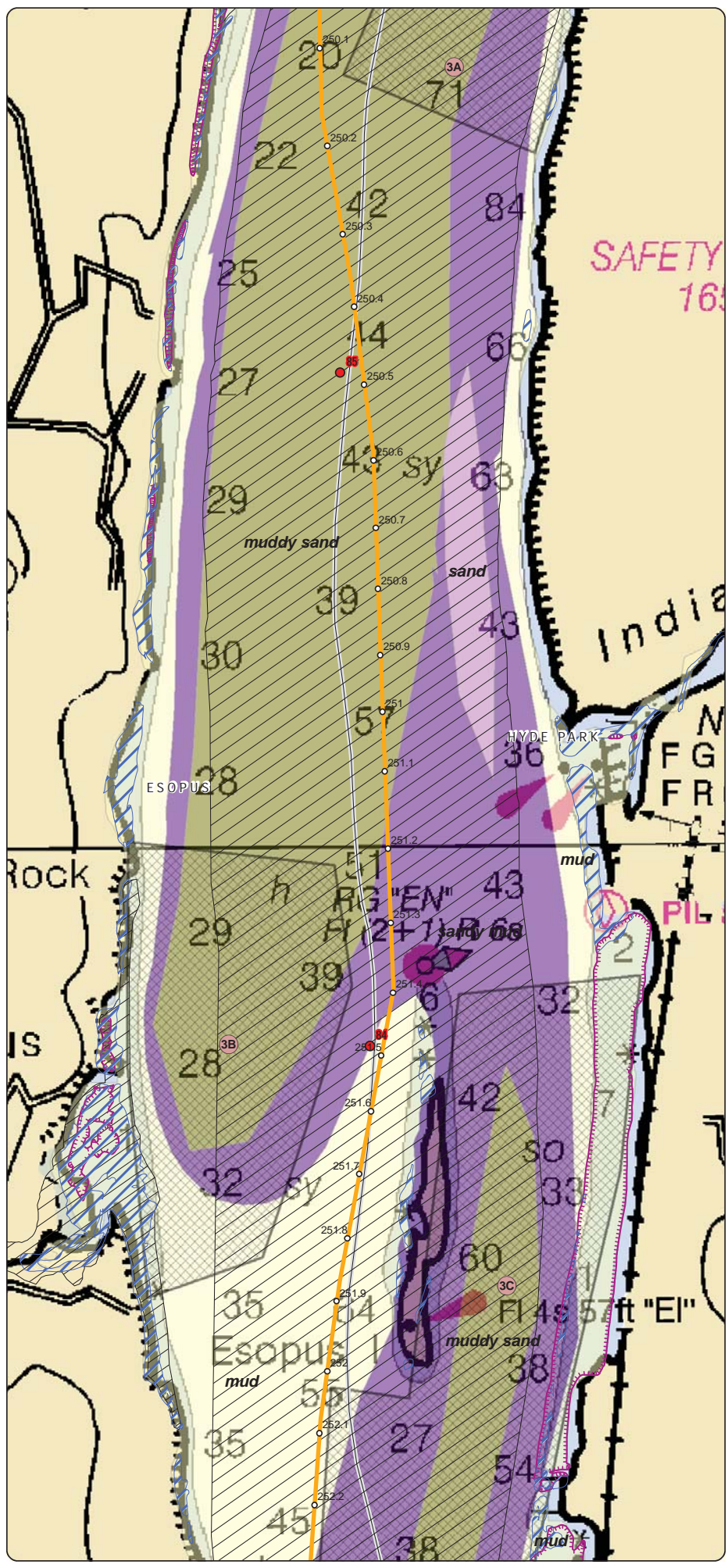
Champlain Hudson Power Express Project  
 Champlain Hudson Power Express Inc.

---

**Hudson River  
 Project Route**  
 Sheet 10 of 43

---

Created: 6/18/2014  
 by: &



**LEGEND**

- 1 Hudson River Miles
- Potential Mattress (Rock or Stiff Soils)
- Potential Mattress (Utility Crossings)
- CHPE Route Mileposts
- Proposed CHPE Submarine Route HVDC
- Proposed CHPE Terrestrial Route HVDC
- Cofferdam
- Significant Coastal Fish and Wildlife Habitat
- Exclusion Zones (NYSDEC) (A) Zone Number
- Contamination Site
- NMFS Identified Atlantic Sturgeon Habitat
- Submerged Aquatic Veg: Valsineria (NYSDEC)
- Submerged Aquatic Veg: Trappa (NYSDEC)

**Sediment Type - NYSDEC Hudson River Estuary Program**

- gravel
- gravelly mud
- gravelly sand
- mud
- muddy gravel
- muddy sand
- sand
- sandy gravel
- sandy mud

- State Boundary
- County Boundary
- Town Boundary

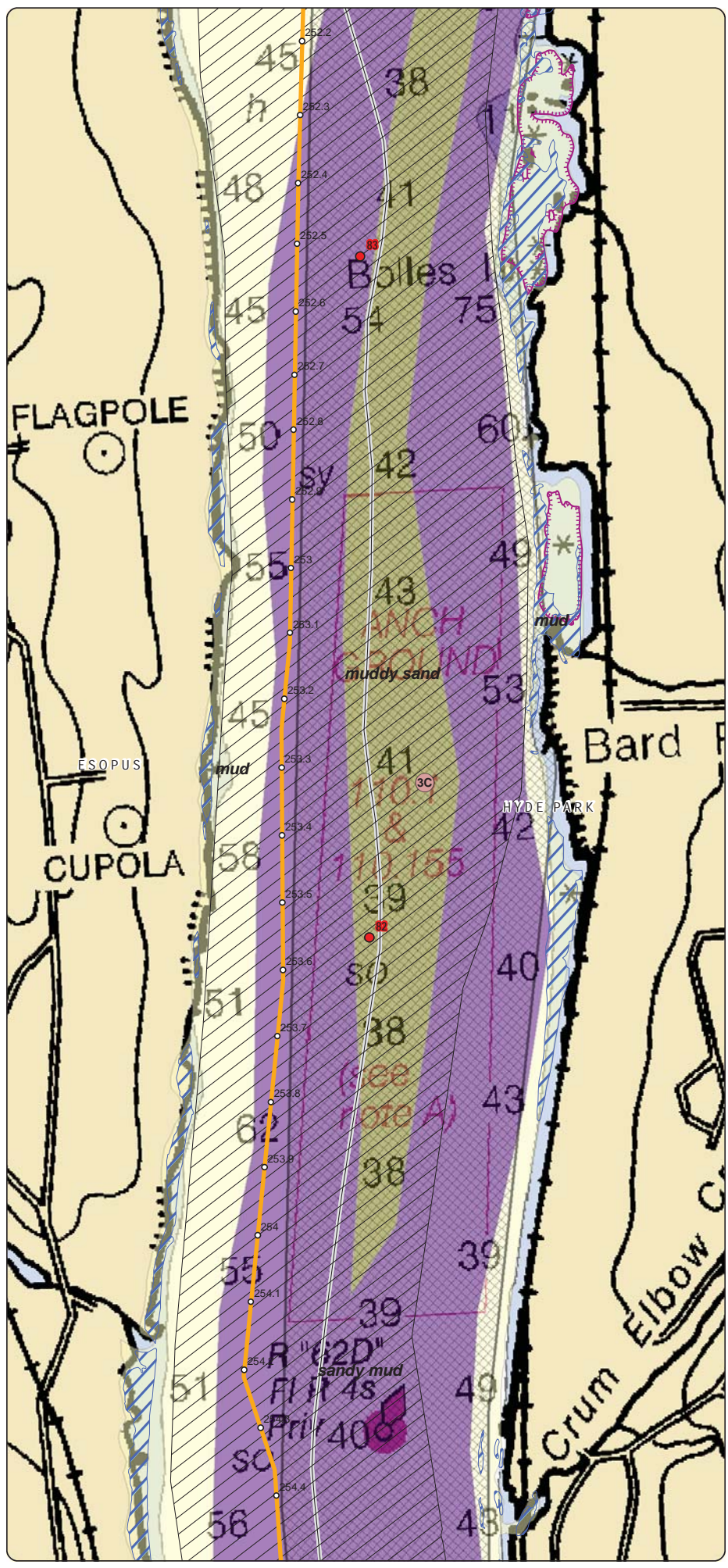
0 750 Feet

  
 Champlain Hudson Power Express Project  
 Champlain Hudson Power Express Inc.  
**Hudson River Project Route**  
 Sheet 11 of 43  
 Created: 6/18/2014  
 by: HTR & CTRC

DATA SOURCES: ESRI, NYSDOT, NOAA, USACE, NY DOS, NY DEC, TDI, TRC

Note: Soundings are in feet. Please see NOAA website for details on chart symbology.

V:\PROJECTS\AUGUST\AUGUST\CHPE\Hudson\_River\_NMFS\_06162014\_111417.mxd



**LEGEND**

- 1 Hudson River Miles
- Potential Mattress (Rock or Stiff Soils)
- Potential Mattress (Utility Crossings)
- CHPE Route Mileposts
- Proposed CHPE Submarine Route HVDC
- Proposed CHPE Terrestrial Route HVDC
- Cofferdam
- Significant Coastal Fish and Wildlife Habitat
- Exclusion Zones (NYSDEC) (A) Zone Number
- Contamination Site
- NMFS Identified Atlantic Sturgeon Habitat
- Submerged Aquatic Veg: Valsineria (NYSDEC)
- Submerged Aquatic Veg: Trappa (NYSDEC)

**Sediment Type - NYSDEC Hudson River Estuary Program**

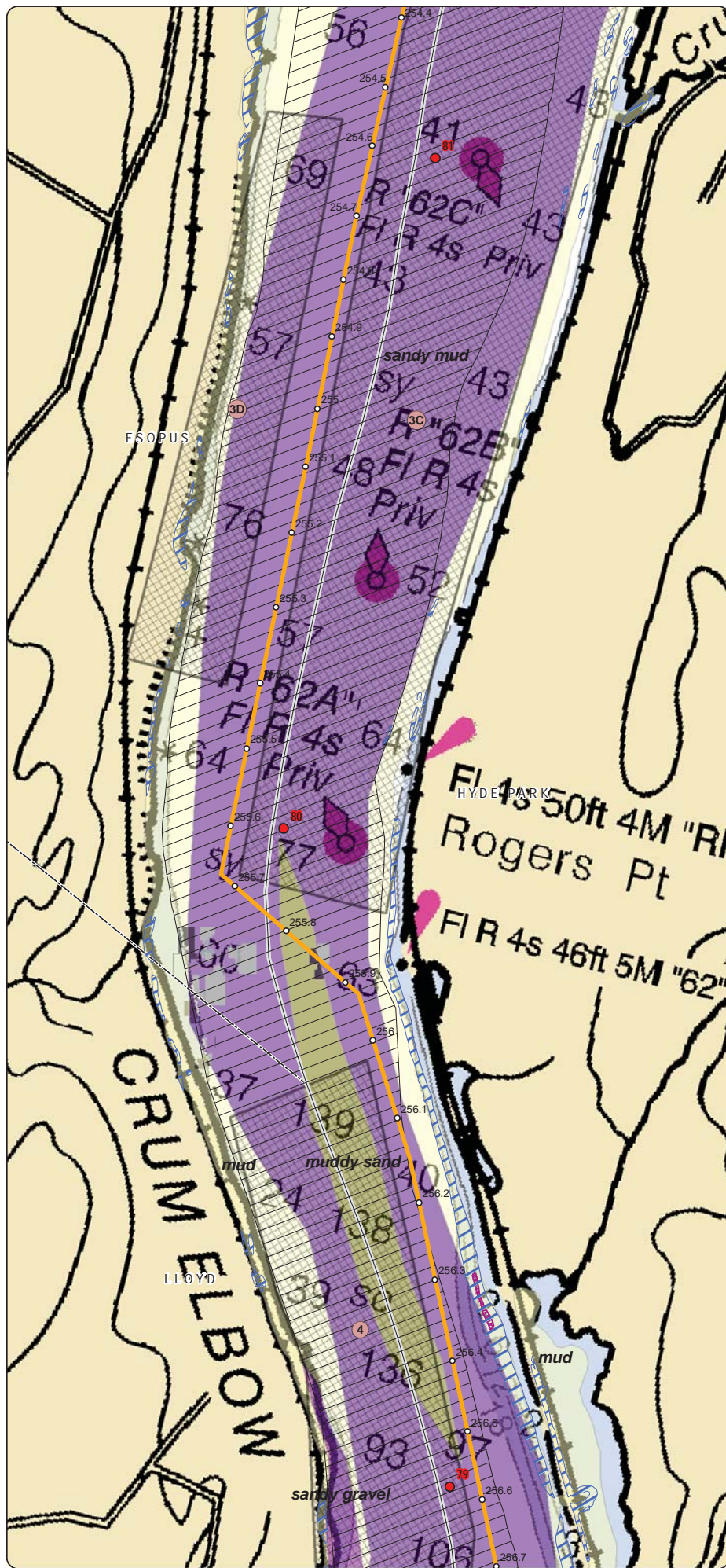
- gravel
- gravelly mud
- gravelly sand
- mud
- muddy gravel
- muddy sand
- sand
- sandy gravel
- sandy mud
- State Boundary
- County Boundary
- Town Boundary

0 750  
Feet

  
 Champlain Hudson Power Express Project  
 Champlain Hudson Power Express Inc.

**Hudson River  
 Project Route**  
 Sheet 12 of 43

Created: 6/18/2014  
 by: HPR & TRC



### LEGEND

- 1 Hudson River Miles
- Potential Mattress (Rock or Stiff Soils)
- Potential Mattress (Utility Crossings)
- CHPE Route Mileposts
- Proposed CHPE Submarine Route HVDC
- Proposed CHPE Terrestrial Route HVDC
- Cofferd Dam
- Significant Coastal Fish and Wildlife Habitat
- Exclusion Zones (NYSDEC) (4) Zone Number
- Contamination Site
- NMFS Identified Atlantic Sturgeon Habitat
- Submerged Aquatic Veg: Valsineria (NYSDEC)
- Submerged Aquatic Veg: Trappa (NYSDEC)

### Sediment Type - NYSDEC Hudson River Estuary Program

- gravel
- gravelly mud
- gravelly sand
- mud
- muddy gravel
- muddy sand
- sand
- sandy gravel
- sandy mud

- State Boundary
- County Boundary
- Town Boundary

0 750  
Feet

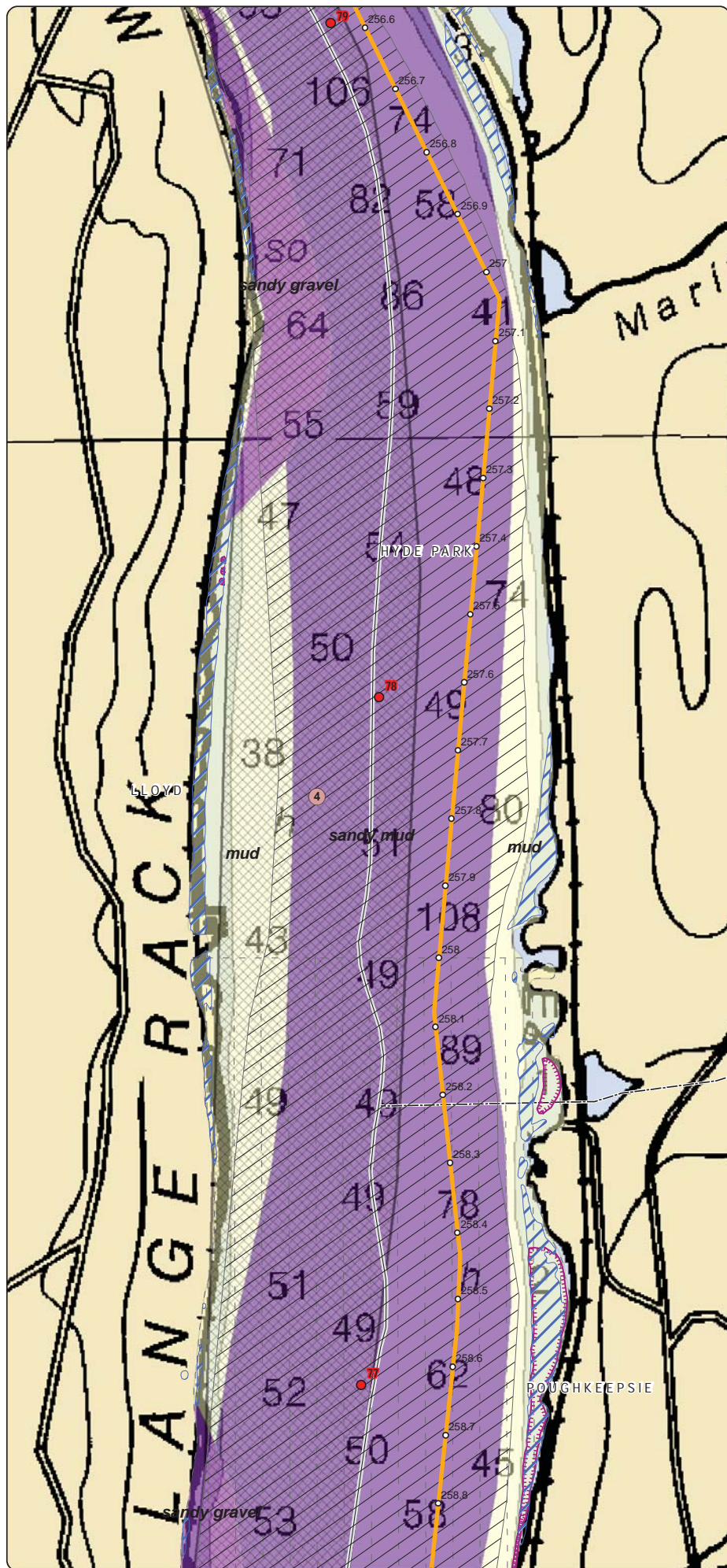
Transmission  
Champlain Hudson Power Express Project  
Champlain Hudson Power Express Inc.

## Hudson River Project Route

Sheet 13 of 43

Created: 6/18/2014

by: &



**LEGEND**

- 1 Hudson River Miles
- Potential Mattress (Rock or Stiff Soils)
- Potential Mattress (Utility Crossings)
- CHPE Route Mileposts
- Proposed CHPE Submarine Route HVDC
- Proposed CHPE Terrestrial Route HVDC
- Cofferdam
- Significant Coastal Fish and Wildlife Habitat
- Exclusion Zones (NYSDEC) (4) Zone Number
- Contamination Site
- NMFS Identified Atlantic Sturgeon Habitat
- Submerged Aquatic Veg: Valsineria (NYSDEC)
- Submerged Aquatic Veg: Trappa (NYSDEC)

**Sediment Type - NYSDEC Hudson River Estuary Program**

- gravel
- gravelly mud
- gravelly sand
- mud
- muddy gravel
- muddy sand
- sand
- sandy gravel
- sandy mud

- State Boundary
- County Boundary
- Town Boundary

0 750  
Feet

  
**Transmission**  
Construction Inc.

**Champlain Hudson Power Express Project**  
 Champlain Hudson Power Express Inc.

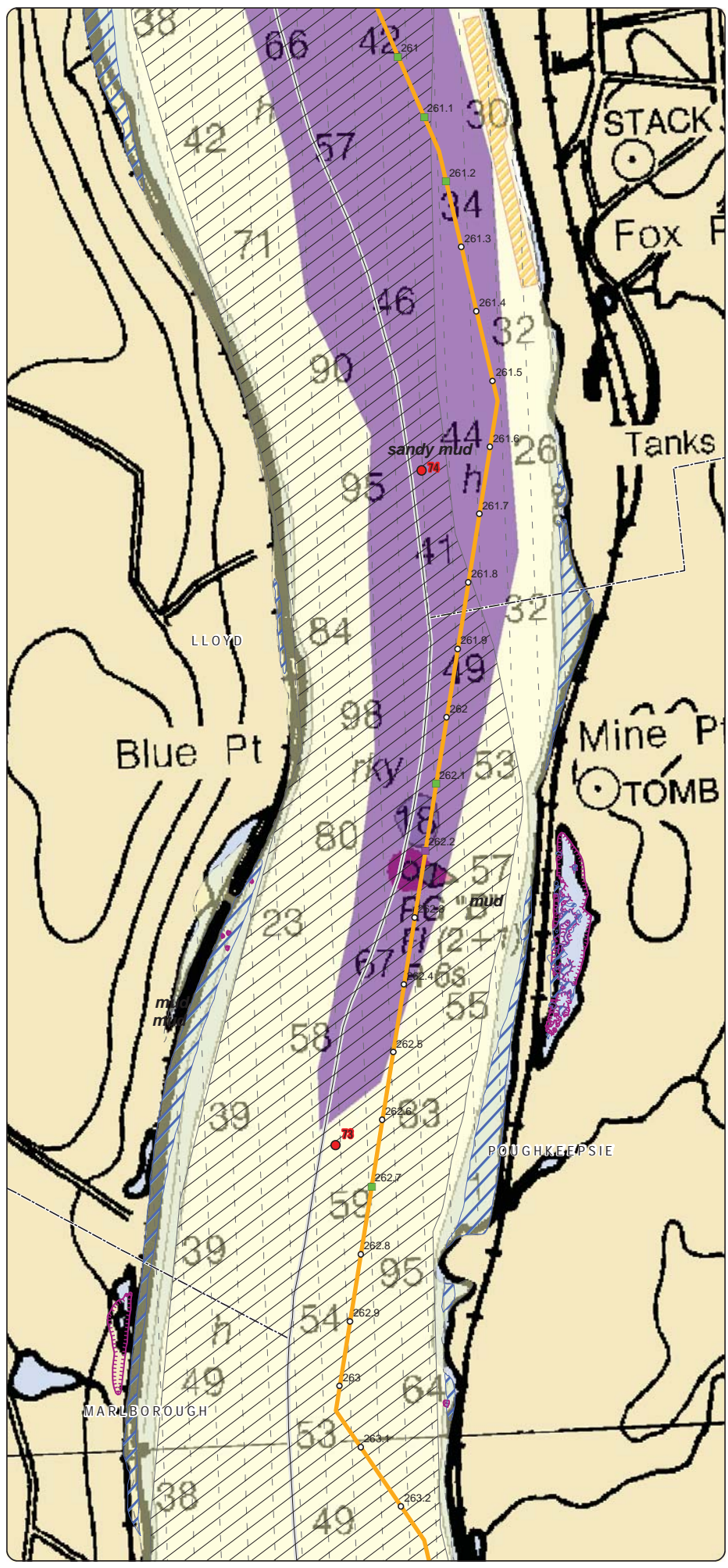
---

**Hudson River**  
**Project Route**  
 Sheet 14 of 43

---

Created: 6/18/2014  
 by:   & 





**LEGEND**

- 1 Hudson River Miles
- Potential Mattress (Rock or Stiff Soils)
- Potential Mattress (Utility Crossings)
- 1 CHPE Route Mileposts
- Proposed CHPE Submarine Route HVDC
- Proposed CHPE Terrestrial Route HVDC
- Cofferdam
- Significant Coastal Fish and Wildlife Habitat
- Exclusion Zones (NYSDEC) (4) Zone Number
- Contamination Site
- NMFS Identified Atlantic Sturgeon Habitat
- Submerged Aquatic Veg: Valsineria (NYSDEC)
- Submerged Aquatic Veg: Trappa (NYSDEC)

**Sediment Type - NYSDEC Hudson River Estuary Program**

- gravel
- gravelly mud
- gravelly sand
- mud
- muddy gravel
- muddy sand
- sand
- sandy gravel
- sandy mud

- State Boundary
- County Boundary
- Town Boundary

0      750
   
 Feet

**Transmission**
  
Champlain Hudson Power Express Inc.

**Champlain Hudson Power Express Project**
  
 Champlain Hudson Power Express Inc.

---

**Hudson River**
  
**Project Route**
  
 Sheet 16 of 43

---

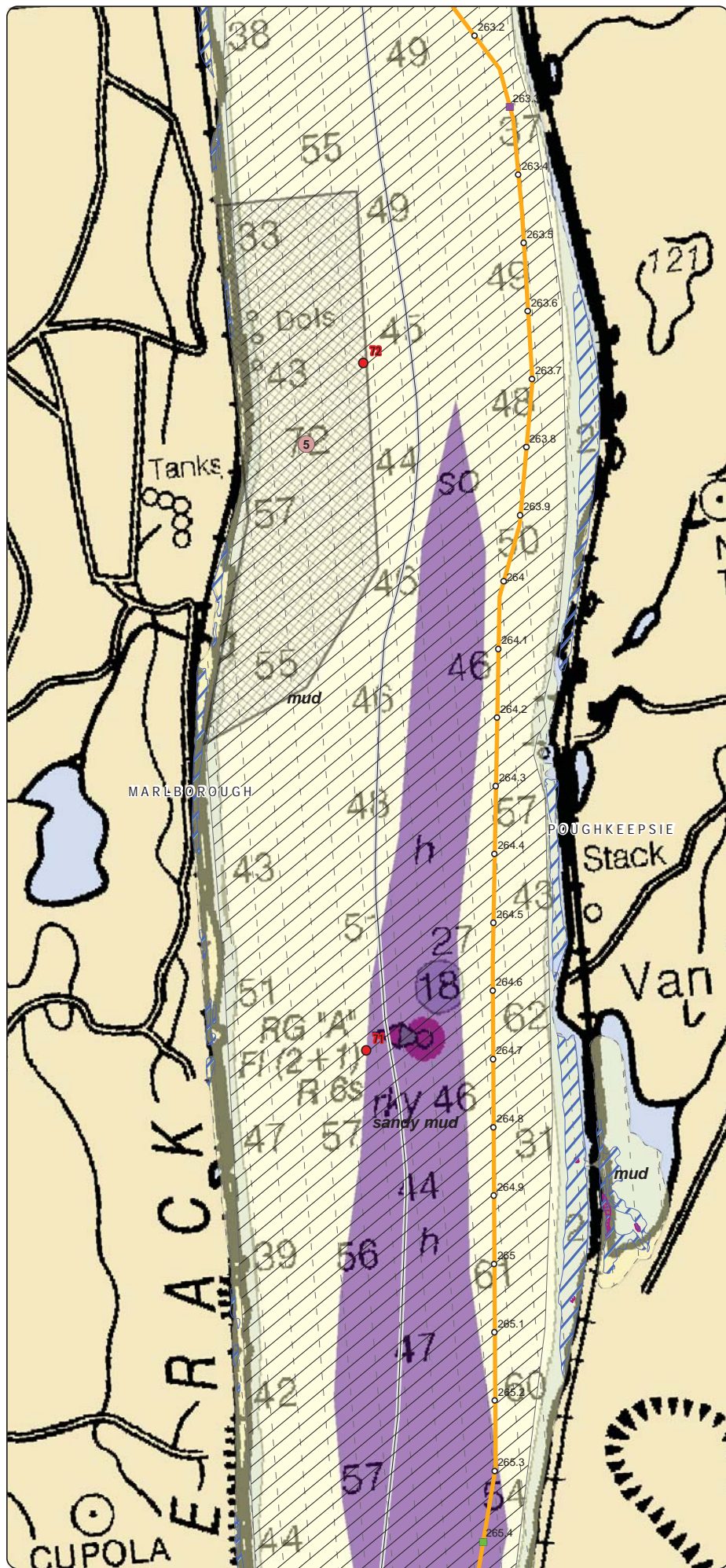
Created: 6/18/2014
  
 by: &

DATA SOURCES: ESRI, NYSOT, NOAA, USACE, NY DOS, NY DEC, TDI, TRC

Note: Soundings are in feet. Please see NOAA website for details on chart symbology.

V:\PROJECT\SAUGUS\AUGUST\Hudson\_River\_NMFS\_06162014\_11417.mxd





**LEGEND**

- 1 Hudson River Miles
- Potential Mattress (Rock or Stiff Soils)
- Potential Mattress (Utility Crossings)
- 1 CHPE Route Mileposts
- Proposed CHPE Submarine Route HVDC
- Proposed CHPE Terrestrial Route HVDC
- Cofferdam
- Significant Coastal Fish and Wildlife Habitat
- Exclusion Zones (NYSDEC) 4 Zone Number
- Contamination Site
- NMFS Identified Atlantic Sturgeon Habitat
- Submerged Aquatic Veg: Valsineria (NYSDEC)
- Submerged Aquatic Veg: Trappa (NYSDEC)

**Sediment Type - NYSDEC Hudson River Estuary Program**

- gravel
- gravelly mud
- gravelly sand
- mud
- muddy gravel
- muddy sand
- sand
- sandy gravel
- sandy mud

- State Boundary
- County Boundary
- Town Boundary

0 750  
Feet

  
**Transmission**  
Champlain Power Inc.

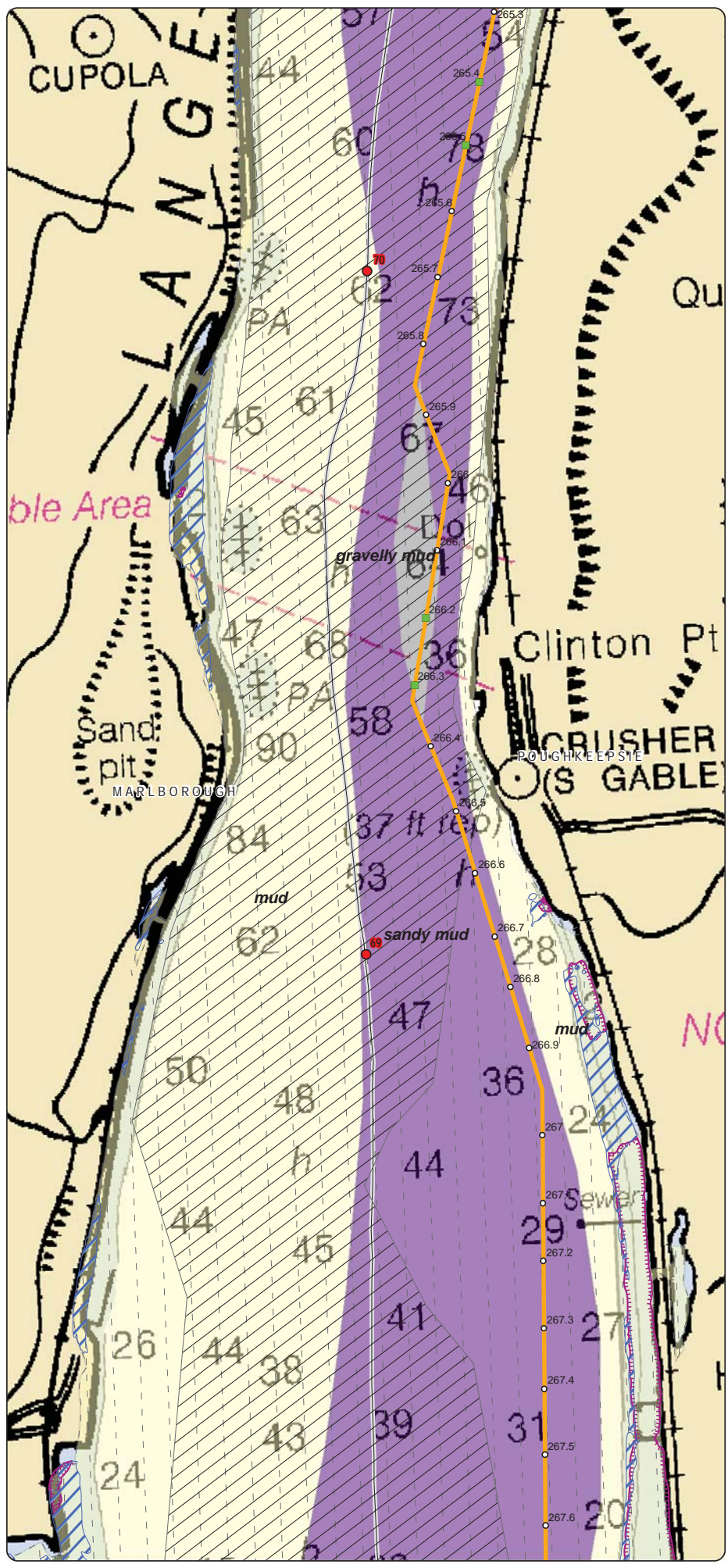
**Champlain Hudson Power Express Project**  
 Champlain Hudson Power Express Inc.

---

**Hudson River**  
**Project Route**  
 Sheet 17 of 43

---

Created: 6/18/2014  
 by:   & 



**LEGEND**

- 1 Hudson River Miles
- Potential Mattress (Rock or Stiff Soils)
- Potential Mattress (Utility Crossings)
- CHPE Route Mileposts
- Proposed CHPE Submarine Route HVDC
- Proposed CHPE Terrestrial Route HVDC
- Cofferdam
- Significant Coastal Fish and Wildlife Habitat
- Exclusion Zones (NYSDEC) ④ Zone Number
- Contamination Site
- NMFS Identified Atlantic Sturgeon Habitat
- Submerged Aquatic Veg: Valsineria (NYSDEC)
- Submerged Aquatic Veg: Trappa (NYSDEC)

**Sediment Type - NYSDEC Hudson River Estuary Program**

- gravel
- gravelly mud
- gravelly sand
- mud
- muddy gravel
- muddy sand
- sand
- sandy gravel
- sandy mud

- State Boundary
- County Boundary
- Town Boundary

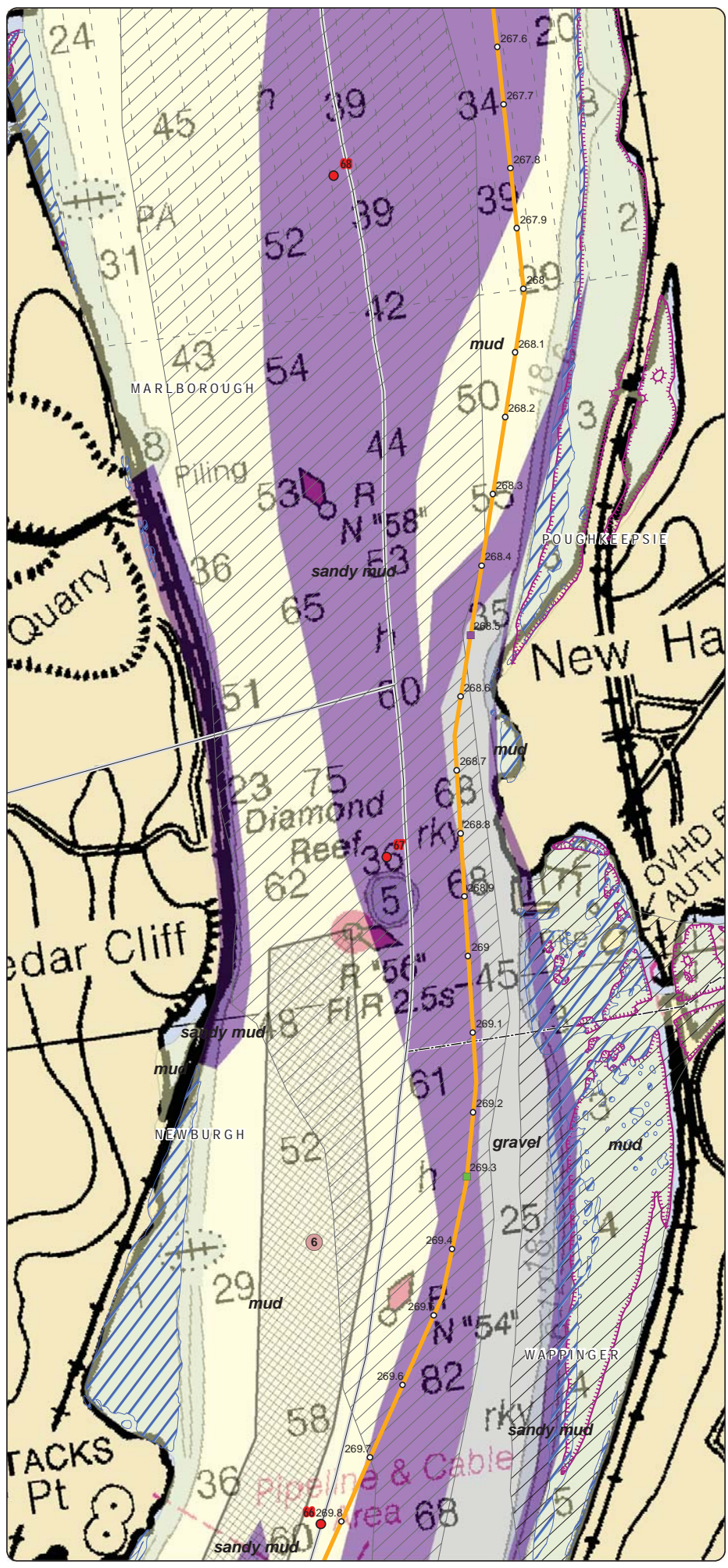
**Transmission**  
 Group  
 Champlain Hudson Power Express Project  
 Champlain Hudson Power Express Inc.

---

**Hudson River  
 Project Route**  
 Sheet 18 of 43

---

Created: 6/18/2014  
 by: &



**LEGEND**

- 1 Hudson River Miles
- Potential Mattress (Rock or Stiff Soils)
- Potential Mattress (Utility Crossings)
- 0<sup>1</sup> CHPE Route Mileposts
- Proposed CHPE Submarine Route HVDC
- Proposed CHPE Terrestrial Route HVDC
- Coffer Dam
- Significant Coastal Fish and Wildlife Habitat
- Exclusion Zones (NYSDEC) 4 Zone Number
- Contamination Site
- NMFS Identified Atlantic Sturgeon Habitat
- Submerged Aquatic Veg: Valsineria (NYSDEC)
- Submerged Aquatic Veg: Trappa (NYSDEC)

**Sediment Type - NYSDEC Hudson River Estuary Program**

- gravel
- gravelly mud
- gravelly sand
- mud
- muddy gravel
- muddy sand
- sand
- sandy gravel
- sandy mud

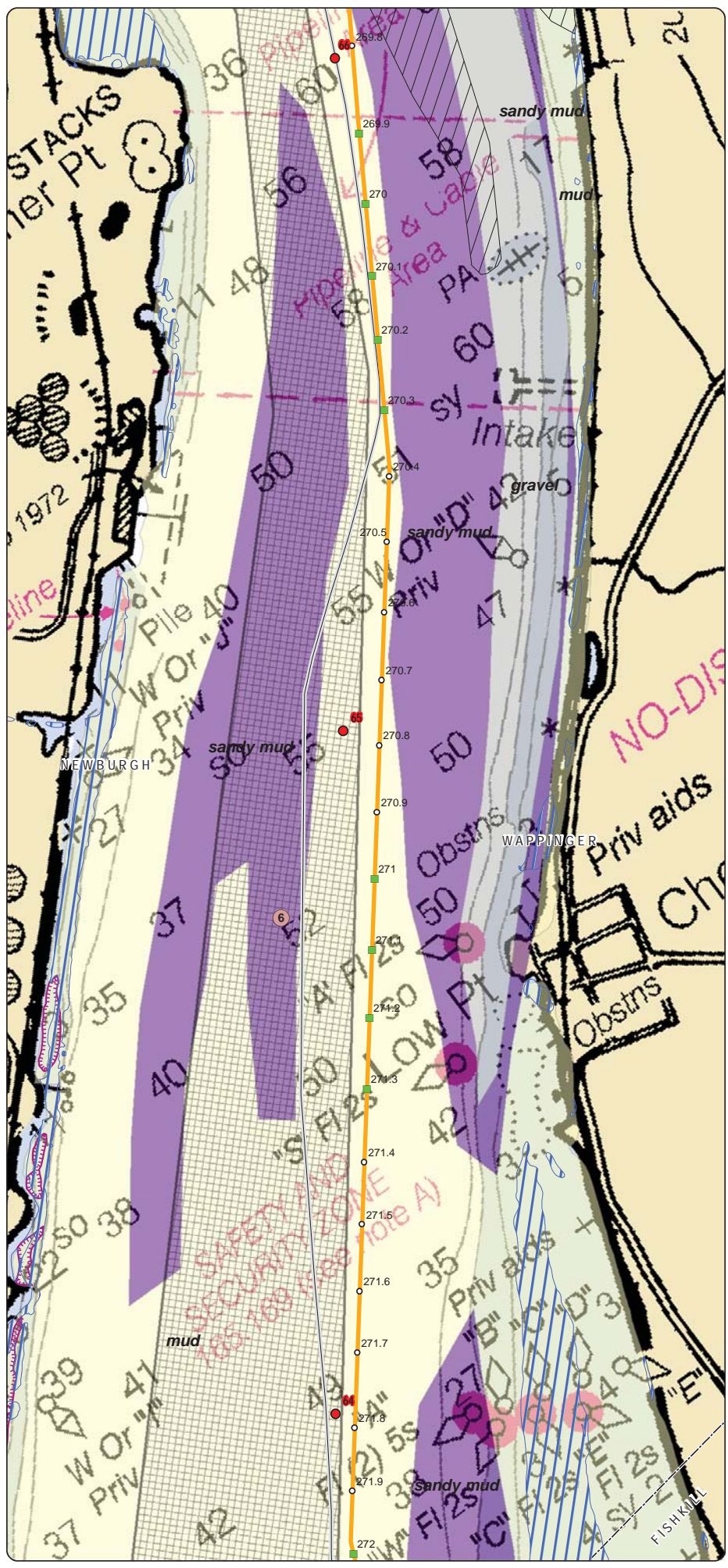
- State Boundary
- County Boundary
- Town Boundary

0 750 Feet

**Transmission**  
Champlain Hudson Power Express Project  
Champlain Hudson Power Express Inc.

**Hudson River Project Route**  
Sheet 19 of 43

Created: 6/18/2014  
by: HTR & CTRC



**LEGEND**

- 1 Hudson River Miles
- Potential Mattress (Rock or Stiff Soils)
- Potential Mattress (Utility Crossings)
- 0<sup>1</sup> CHPE Route Mileposts
- Proposed CHPE Submarine Route HVDC
- Proposed CHPE Terrestrial Route HVDC
- Coffer Dam
- Significant Coastal Fish and Wildlife Habitat
- Exclusion Zones (NYSDEC) (Zone Number)
- Contamination Site
- NMFS Identified Atlantic Sturgeon Habitat
- Submerged Aquatic Veg: Valsineria (NYSDEC)
- Submerged Aquatic Veg: Trappa (NYSDEC)

**Sediment Type - NYSDEC Hudson River Estuary Program**

- gravel
- gravelly mud
- gravelly sand
- mud
- muddy gravel
- muddy sand
- sand
- sandy gravel
- sandy mud

- State Boundary
- County Boundary
- Town Boundary

0 750 Feet

**Transmission**  
 Champlain Hudson Power Express Project  
 Champlain Hudson Power Express Inc.

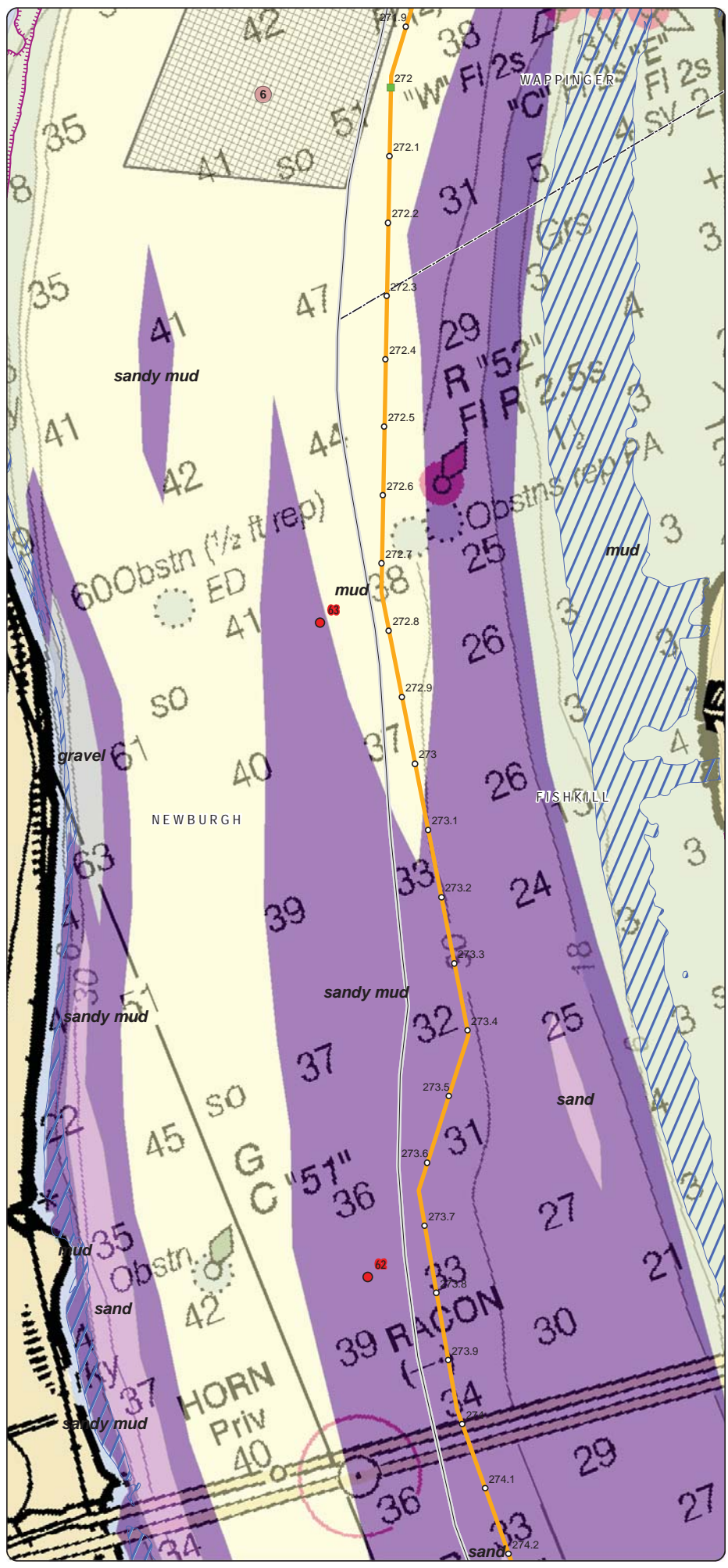
**Hudson River Project Route**  
 Sheet 20 of 43

Created: 6/18/2014  
 by: HTR & CTRC

DATA SOURCES: ESRI, NYSDOT, NOAA, USACE, NY DOS, NY DEC, TDI, TRC

Note: Soundings are in feet. Please see NOAA website for details on chart symbology.

Y:\PROJECT\SAUGUS\AVD\CHPE\Hudson\_River\_AMF\5\_06162014\_11417.mxd



**LEGEND**

- <sup>1</sup> Hudson River Miles
- Potential Mattress (Rock or Stiff Soils)
- Potential Mattress (Utility Crossings)
- <sup>1</sup> CHPE Route Mileposts
- Proposed CHPE Submarine Route HVDC
- Proposed CHPE Terrestrial Route HVDC
- Cofferdam
- ▨ Significant Coastal Fish and Wildlife Habitat
- ▨ Exclusion Zones (NYSDEC) (4) Zone Number
- ▨ Contamination Site
- - - NMFS Identified Atlantic Sturgeon Habitat
- ▨ Submerged Aquatic Veg: Valsineria (NYSDEC)
- ▨ Submerged Aquatic Veg: Trappa (NYSDEC)

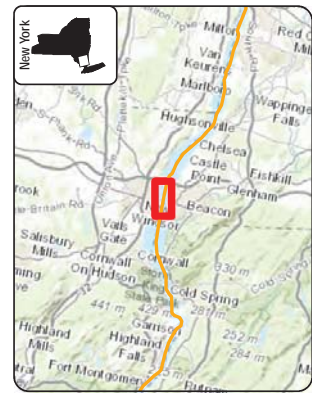
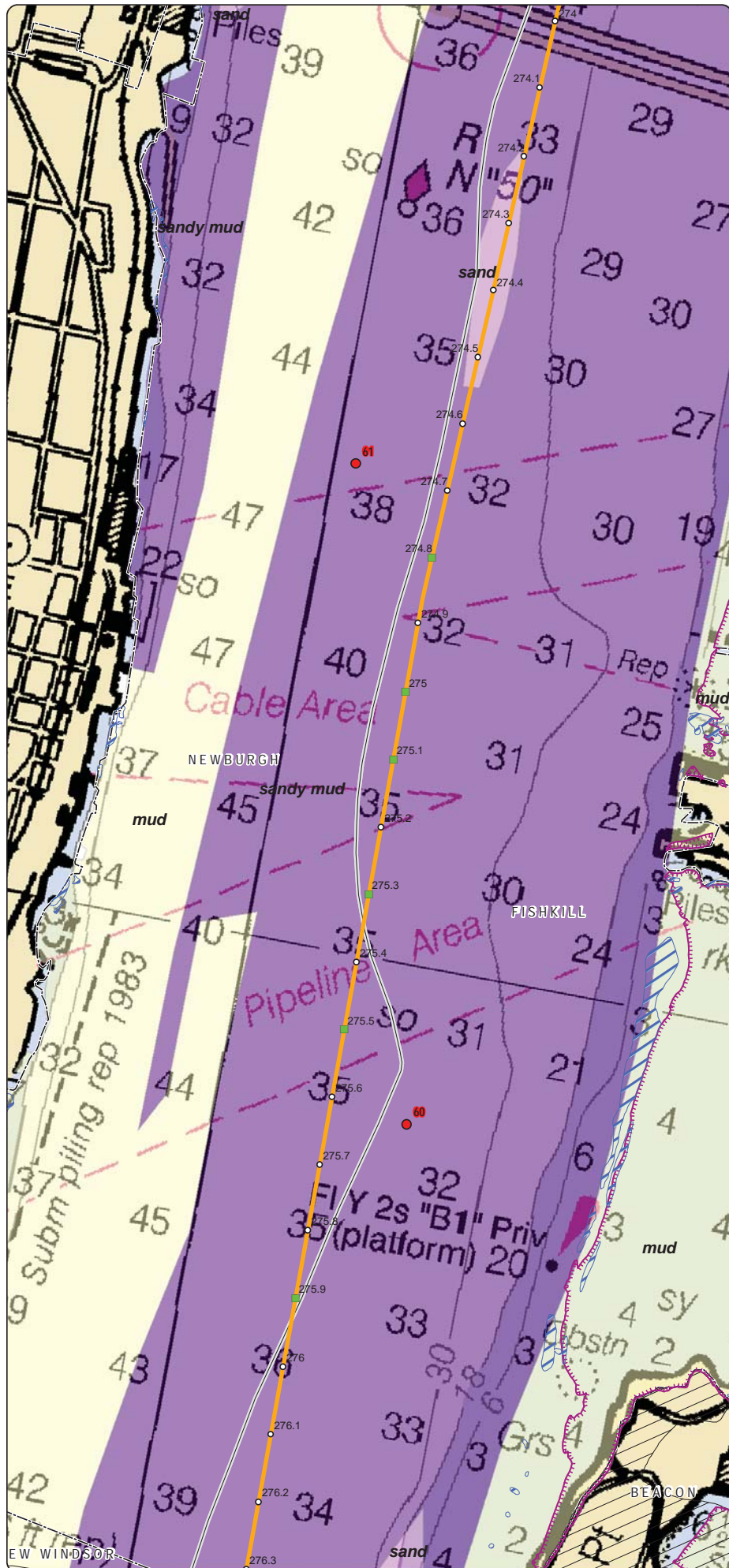
**Sediment Type - NYSDEC Hudson River Estuary Program**

- gravel
- gravelly mud
- gravelly sand
- mud
- muddy gravel
- muddy sand
- sand
- sandy gravel
- sandy mud

State Boundary  
 County Boundary  
 Town Boundary

0 750  
Feet

Champlain Hudson Power Express Project  
 Champlain Hudson Power Express Inc.  
**Hudson River Project Route**  
 Sheet 21 of 43  
 Created: 6/18/2014  
 by: HTR & CTRC



**LEGEND**

- 1 Hudson River Miles
- Potential Mattress (Rock or Stiff Soils)
- Potential Mattress (Utility Crossings)
- CHPE Route Mileposts
- Proposed CHPE Submarine Route HVDC
- Proposed CHPE Terrestrial Route HVDC
- Cofferdam
- Significant Coastal Fish and Wildlife Habitat
- Exclusion Zones (NYSDEC) (A) Zone Number
- Contamination Site
- NMFS Identified Atlantic Sturgeon Habitat
- Submerged Aquatic Veg: Valsineria (NYSDEC)
- Submerged Aquatic Veg: Trappa (NYSDEC)

**Sediment Type - NYSDEC Hudson River Estuary Program**

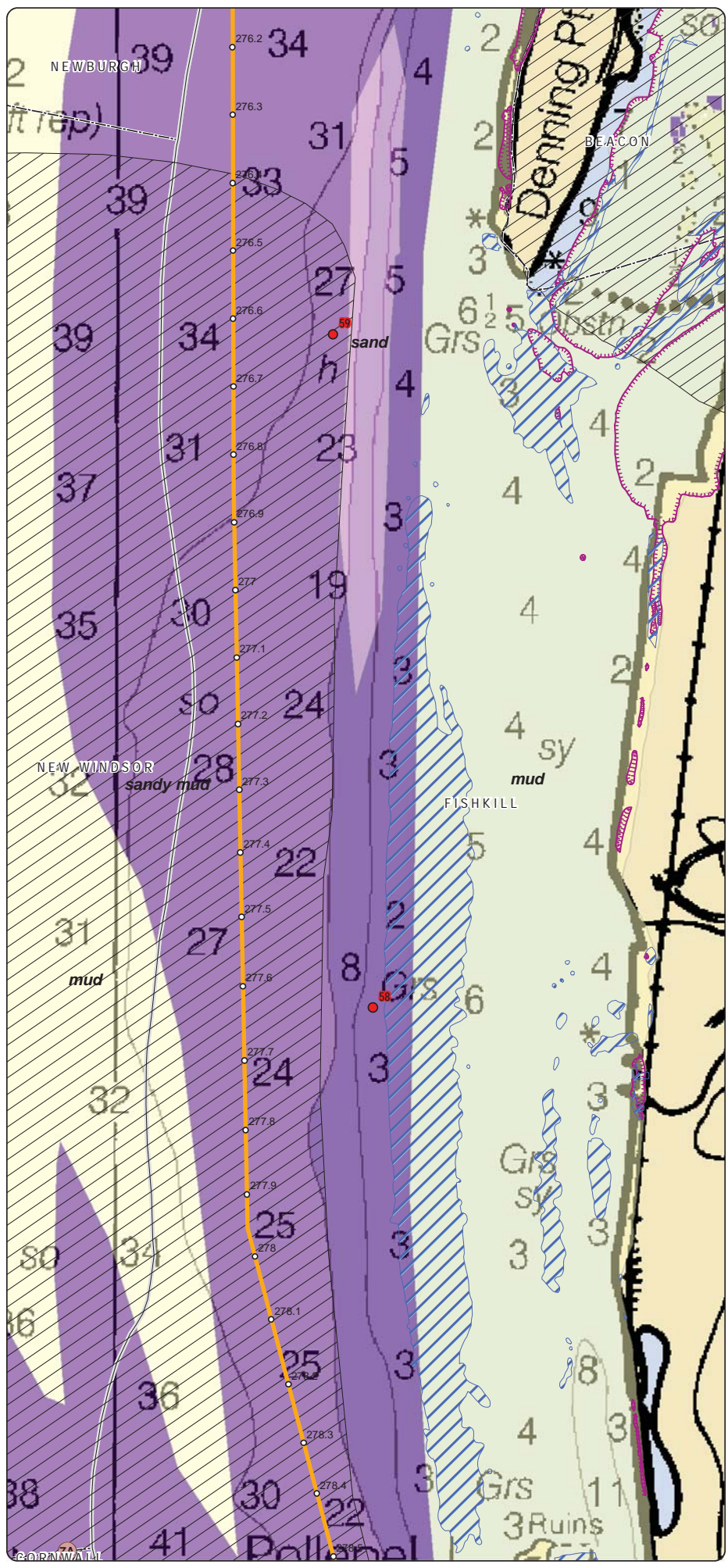
- gravel
- gravelly mud
- gravelly sand
- mud
- muddy gravel
- muddy sand
- sand
- sandy gravel
- sandy mud

- State Boundary
- County Boundary
- Town Boundary

0 750  
Feet

  
**Transmission**  
 Champlain Hudson Power Express Project  
 Champlain Hudson Power Express Inc.  
**Hudson River Project Route**  
 Sheet 22 of 43  
 Created: 6/18/2014  
 by: H2R & TRC

V:\PROJECT\SAUGUS\A\TID\CHPE\Hudson\_River\_NMFS\_06162014\_11417.mxd



**LEGEND**

- 1 Hudson River Miles
- Potential Mattress (Rock or Stiff Soils)
- Potential Mattress (Utility Crossings)
- 1 CHPE Route Mileposts
- Proposed CHPE Submarine Route HVDC
- Proposed CHPE Terrestrial Route HVDC
- Cofferdam
- Significant Coastal Fish and Wildlife Habitat
- Exclusion Zones (NYSDEC) (Zone Number)
- Contamination Site
- NMFS Identified Atlantic Sturgeon Habitat
- Submerged Aquatic Veg: Valsineria (NYSDEC)
- Submerged Aquatic Veg: Trappa (NYSDEC)

**Sediment Type - NYSDEC Hudson River Estuary Program**

- gravel
- gravelly mud
- gravelly sand
- mud
- muddy gravel
- muddy sand
- sand
- sandy gravel
- sandy mud

- State Boundary
- County Boundary
- Town Boundary

0       750  
 Feet

**Transmission**  
Construction Inc.

Champlain Hudson Power Express Project  
 Champlain Hudson Power Express Inc.

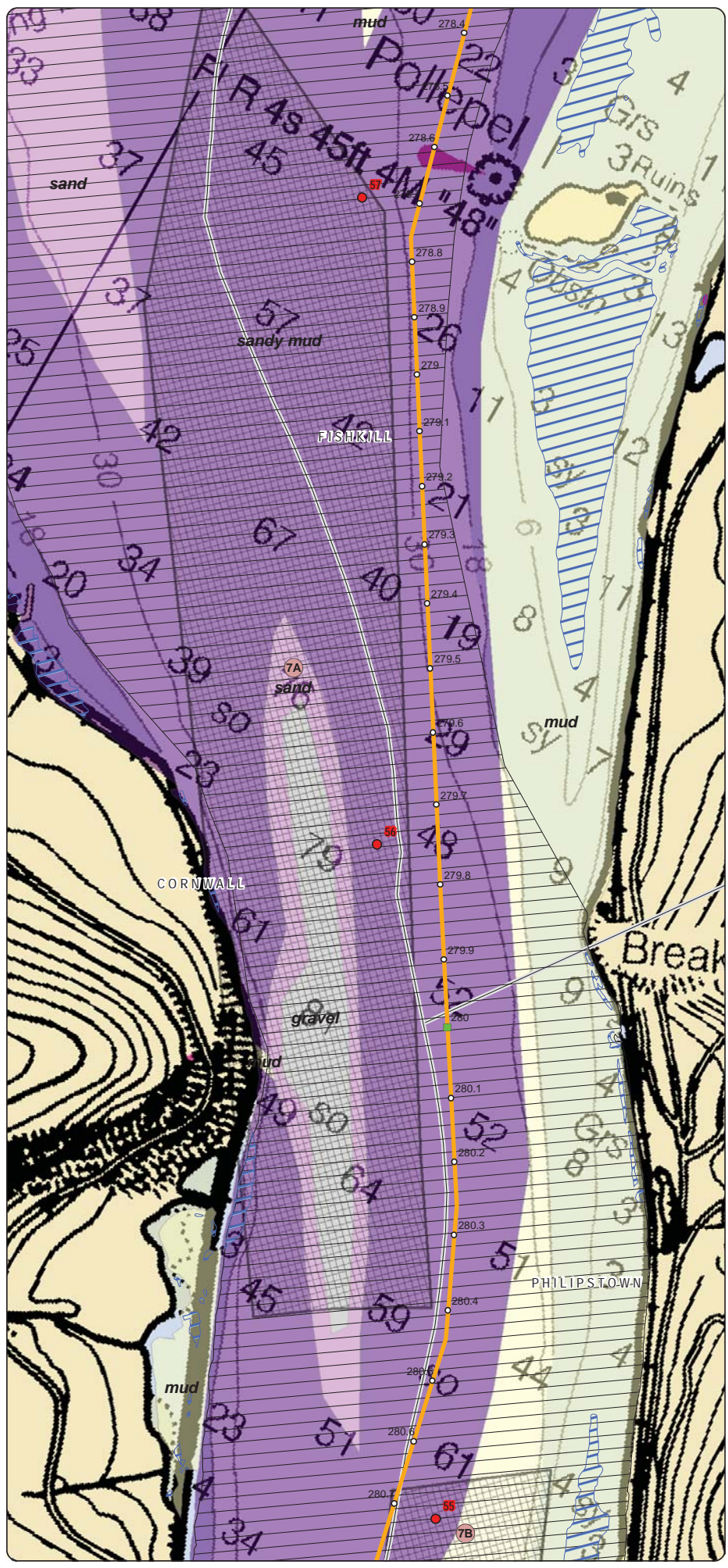
---

**Hudson River  
 Project Route**  
 Sheet 23 of 43

---

Created: 6/18/2014  
 by: HPR & CTRC

V:\PROJECT\SAUGUS\AUGUST\CHPE\Hudson\_River\_NMFS\_06162014\_11417.mxd



**LEGEND**

- 1 Hudson River Miles
- Potential Mattress (Rock or Stiff Soils)
- Potential Mattress (Utility Crossings)
- 1 CHPE Route Mileposts
- Proposed CHPE Submarine Route HVDC
- Proposed CHPE Terrestrial Route HVDC
- Cofferdam
- Significant Coastal Fish and Wildlife Habitat
- Exclusion Zones (NYSDEC) (Zone Number)
- Contamination Site
- NMFS Identified Atlantic Sturgeon Habitat
- Submerged Aquatic Veg: Valsineria (NYSDEC)
- Submerged Aquatic Veg: Trappa (NYSDEC)

**Sediment Type - NYSDEC Hudson River Estuary Program**

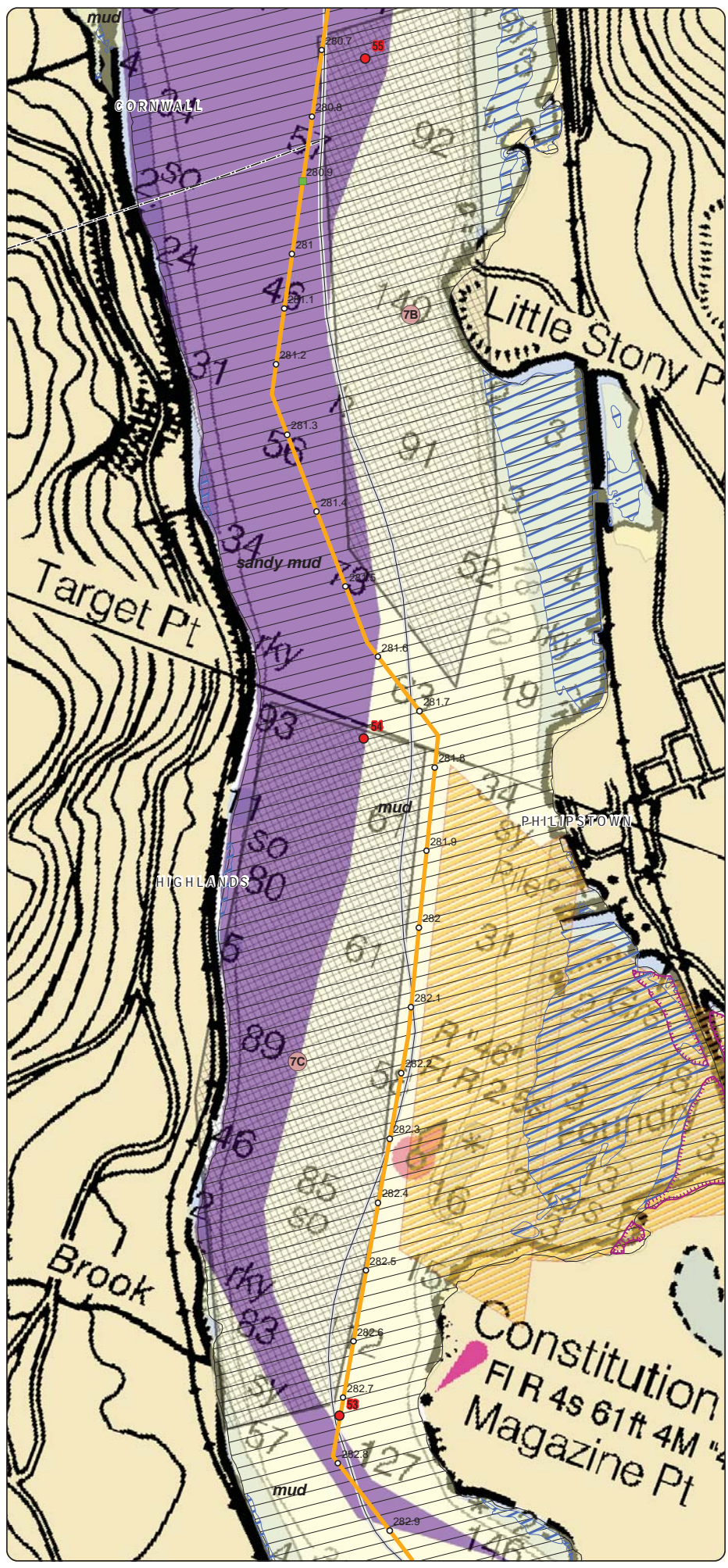
- gravel
- gravelly mud
- gravelly sand
- mud
- muddy gravel
- muddy sand
- sand
- sandy gravel
- sandy mud

- State Boundary
- County Boundary
- Town Boundary

0 750  
 Feet

Champlain Hudson Power Express Project  
 Champlain Hudson Power Express Inc.  
**Hudson River Project Route**  
 Sheet 24 of 43  
 Created: 6/18/2014  
 by: HTR & CTRC





**LEGEND**

- 1 Hudson River Miles
- Potential Mattress (Rock or Stiff Soils)
- Potential Mattress (Utility Crossings)
- CHPE Route Mileposts
- Proposed CHPE Submarine Route HVDC
- Proposed CHPE Terrestrial Route HVDC
- Cofferdam
- Significant Coastal Fish and Wildlife Habitat
- Exclusion Zones (NYSDEC) (A) Zone Number
- Contamination Site
- NMFS Identified Atlantic Sturgeon Habitat
- Submerged Aquatic Veg: Valsineria (NYSDEC)
- Submerged Aquatic Veg: Trappa (NYSDEC)

**Sediment Type - NYSDEC Hudson River Estuary Program**

- gravel
- gravelly mud
- gravelly sand
- mud
- muddy gravel
- muddy sand
- sand
- sandy gravel
- sandy mud

- State Boundary
- County Boundary
- Town Boundary

0 750  
Feet

  
**Transmission**  
Corporation, Inc.

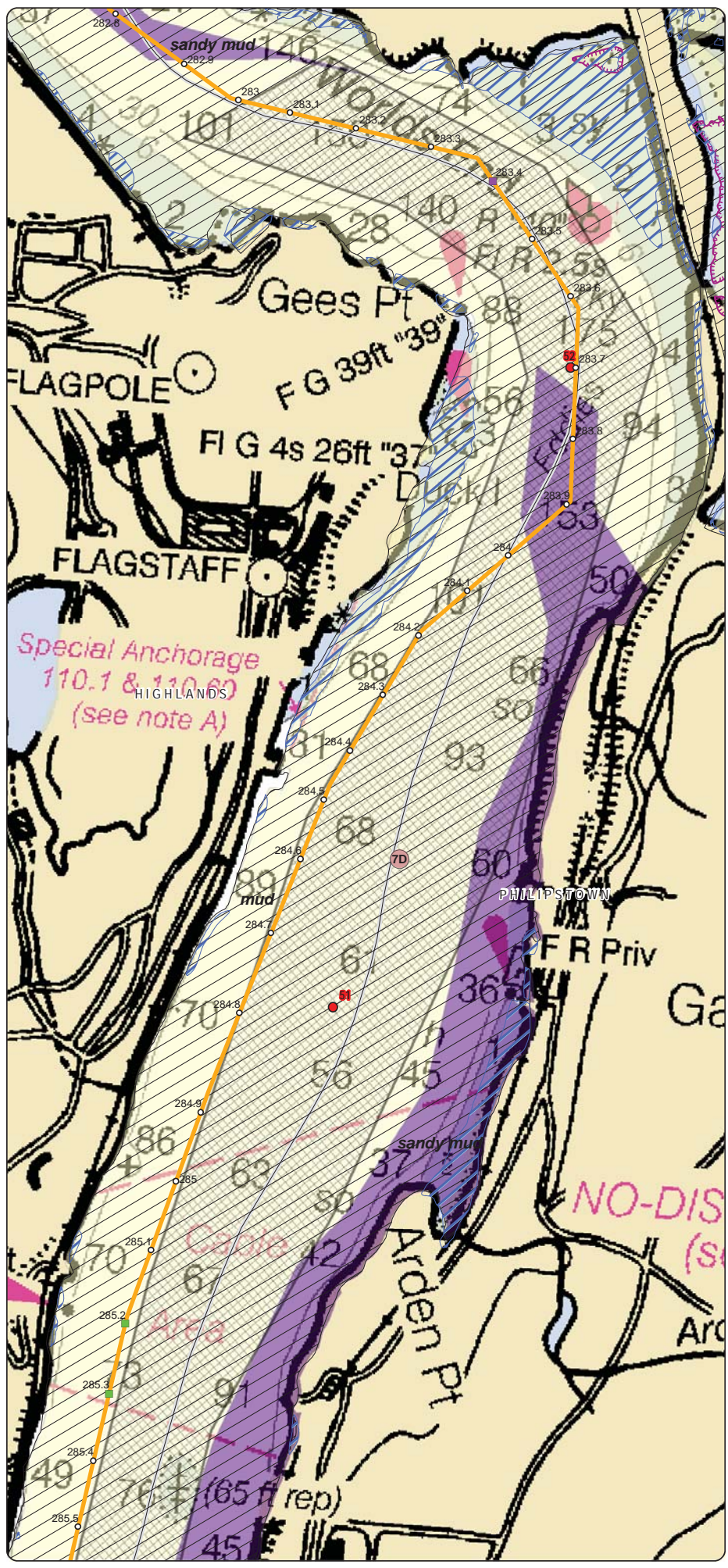
Champlain Hudson Power Express Project  
 Champlain Hudson Power Express Inc.

---

**Hudson River  
 Project Route**  
 Sheet 25 of 43

---

Created: 6/18/2014  
 by:   & 



**LEGEND**

- 1 Hudson River Miles
- Potential Mattress (Rock or Stiff Soils)
- Potential Mattress (Utility Crossings)
- 1 CHPE Route Mileposts
- Proposed CHPE Submarine Route HVDC
- Proposed CHPE Terrestrial Route HVDC
- Cofferdam
- Significant Coastal Fish and Wildlife Habitat
- Exclusion Zones (NYSDEC) (A) Zone Number
- Contamination Site
- NMFS Identified Atlantic Sturgeon Habitat
- Submerged Aquatic Veg: Valsineria (NYSDEC)
- Submerged Aquatic Veg: Trappa (NYSDEC)

**Sediment Type - NYSDEC Hudson River Estuary Program**

- gravel
- gravelly mud
- gravelly sand
- mud
- muddy gravel
- muddy sand
- sand
- sandy gravel
- sandy mud

- State Boundary
- County Boundary
- Town Boundary

**Transmission**  
 Champlain Hudson Power Express Project  
 Champlain Hudson Power Express Inc.

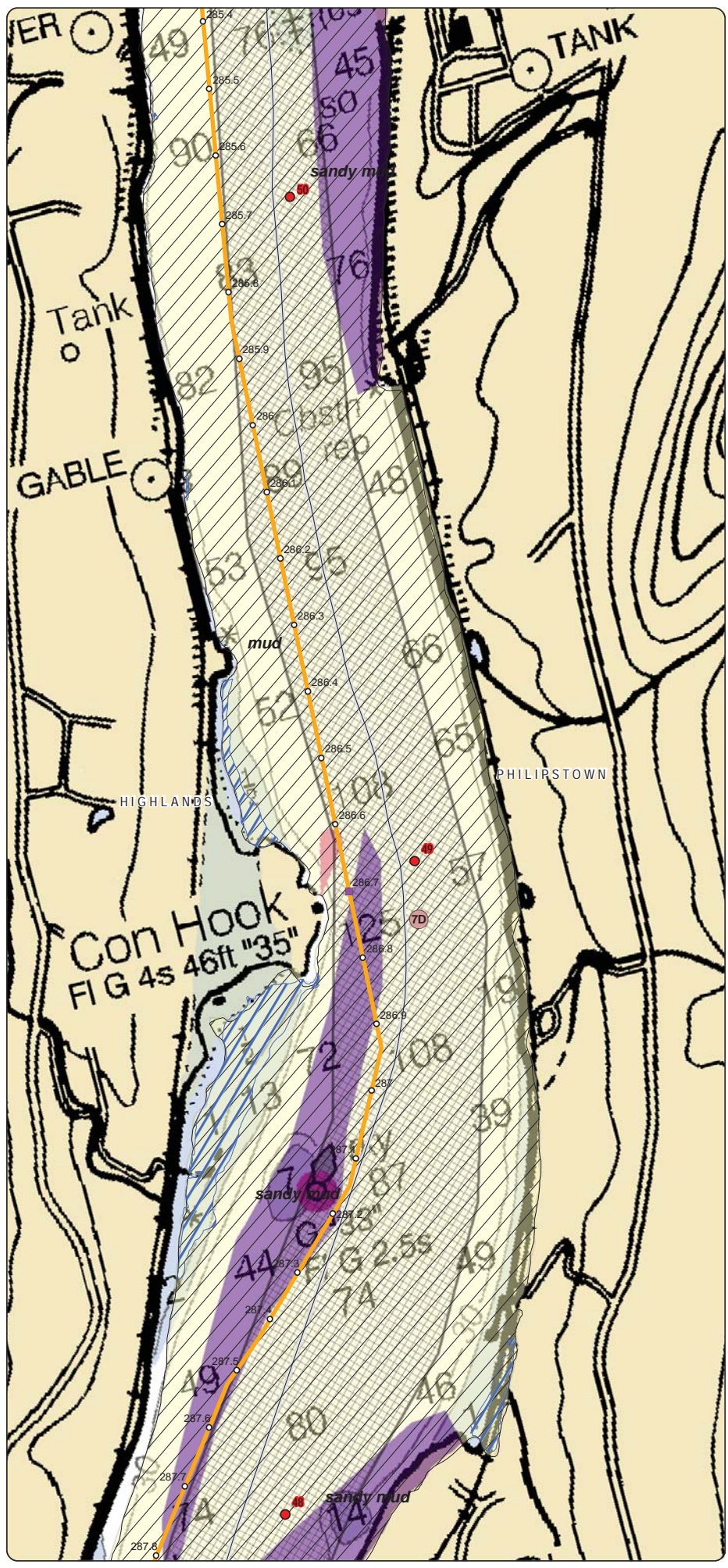
---

**Hudson River  
 Project Route**  
 Sheet 26 of 43

---

Created: 6/18/2014  
 by: &

Y:\PROJECT\SAUGUS\ATD\CHPE\Hudson\_River\_NMFS\_06162014\_11x17.mxd



**LEGEND**

- 1 Hudson River Miles
- Potential Mattress (Rock or Stiff Soils)
- Potential Mattress (Utility Crossings)
- CHPE Route Mileposts
- Proposed CHPE Submarine Route HVDC
- Proposed CHPE Terrestrial Route HVDC
- Cofferdam
- Significant Coastal Fish and Wildlife Habitat
- Exclusion Zones (NYSDEC) (4) Zone Number
- Contamination Site
- NMFS Identified Atlantic Sturgeon Habitat
- Submerged Aquatic Veg: Valsineria (NYSDEC)
- Submerged Aquatic Veg: Trappa (NYSDEC)

**Sediment Type - NYSDEC Hudson River Estuary Program**

- gravel
- gravelly mud
- gravelly sand
- mud
- muddy gravel
- muddy sand
- sand
- sandy gravel
- sandy mud

- State Boundary
- County Boundary
- Town Boundary

0 750  
Feet

  
**Transmission**  
Champlain Power Inc.

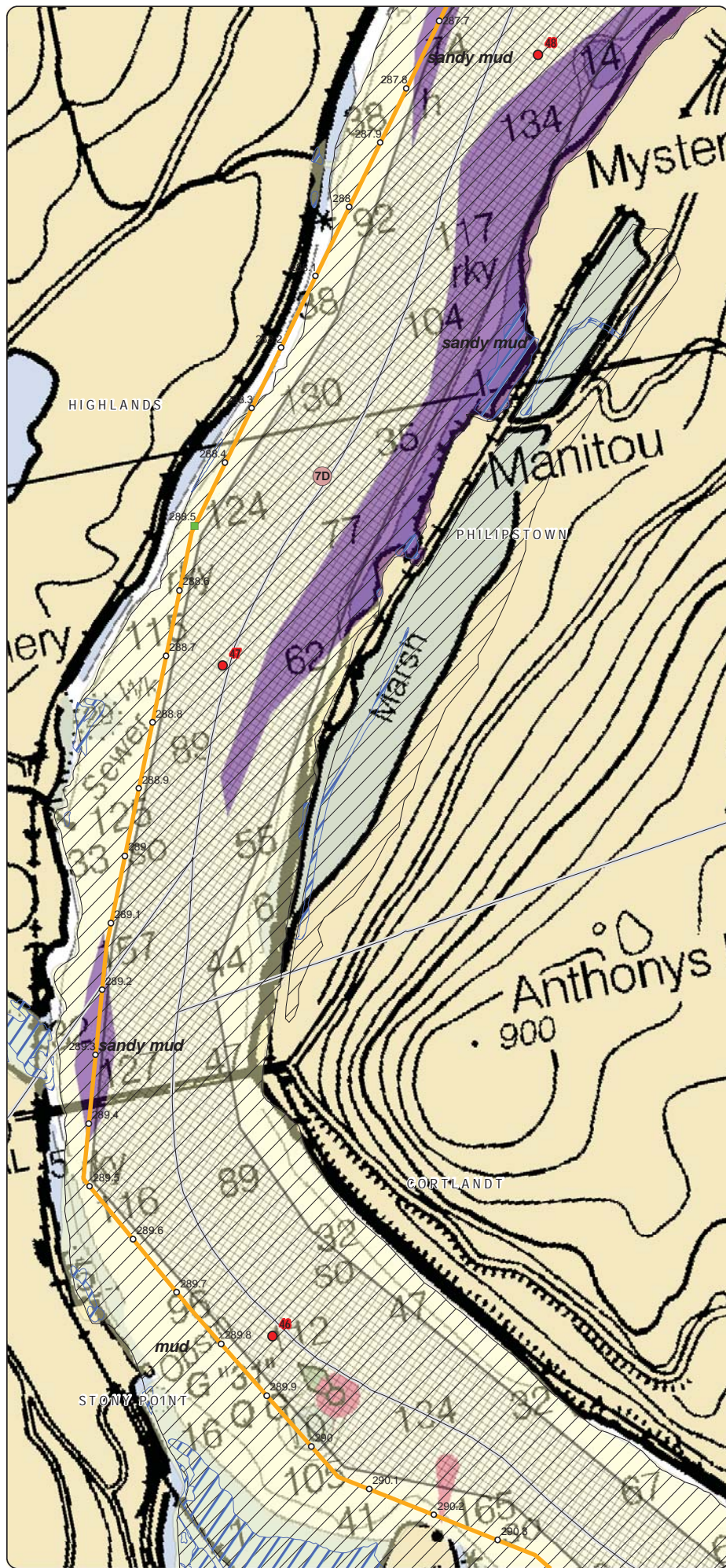
**Champlain Hudson Power Express Project**  
 Champlain Hudson Power Express Inc.

---

**Hudson River Project Route**  
 Sheet 27 of 43

---

Created: 6/18/2014  
 by:   & 



**LEGEND**

- 1 Hudson River Miles
- Potential Mattress (Rock or Stiff Soils)
- Potential Mattress (Utility Crossings)
- 1 CHPE Route Mileposts
- Proposed CHPE Submarine Route HVDC
- Proposed CHPE Terrestrial Route HVDC
- Cofferdam
- Significant Coastal Fish and Wildlife Habitat
- Exclusion Zones (NYSDEC) (4) Zone Number
- Contamination Site
- NMFS Identified Atlantic Sturgeon Habitat
- Submerged Aquatic Veg: Valsineria (NYSDEC)
- Submerged Aquatic Veg: Trappa (NYSDEC)

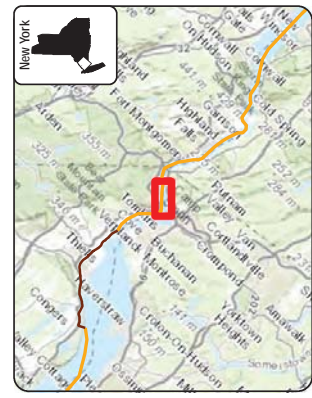
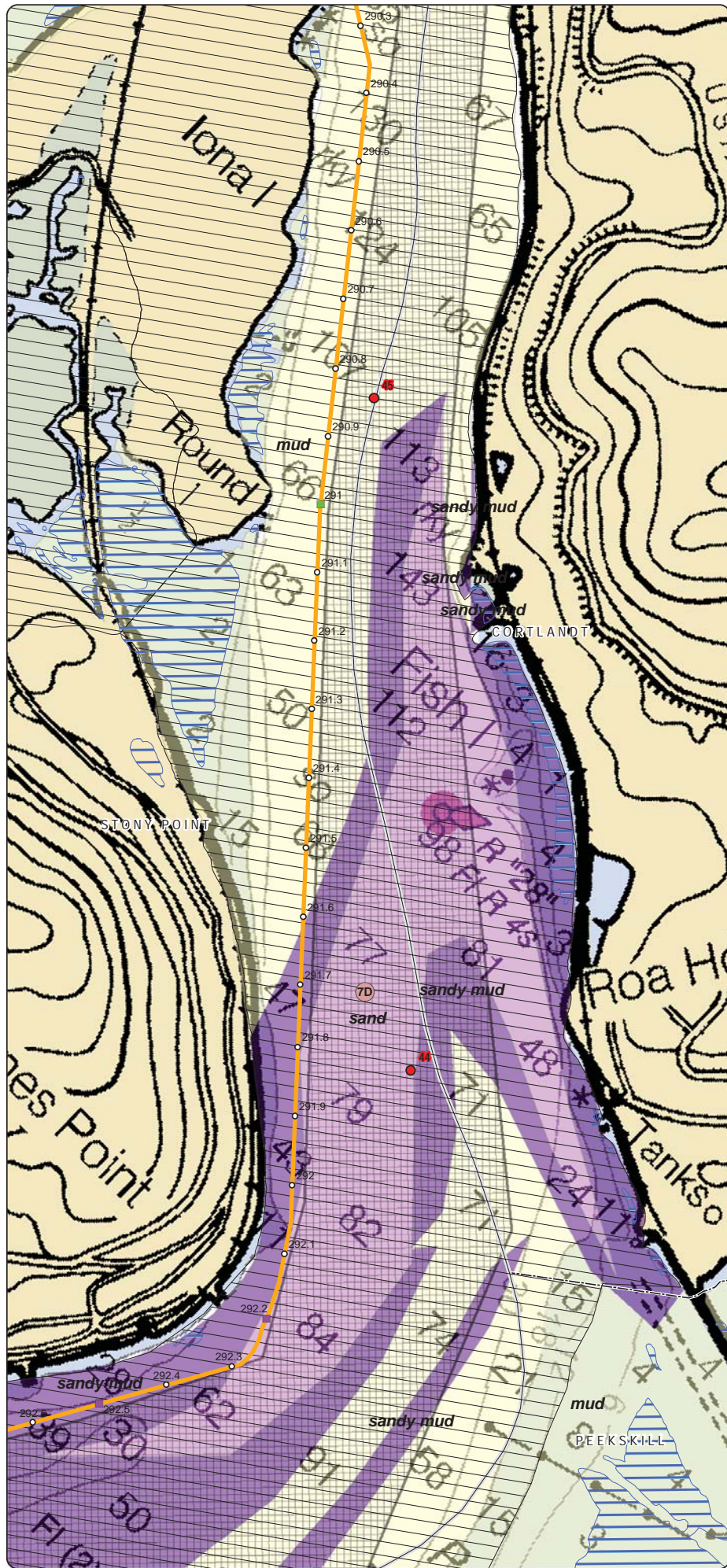
**Sediment Type - NYSDEC Hudson River Estuary Program**

- gravel
- gravelly mud
- gravelly sand
- mud
- muddy gravel
- muddy sand
- sand
- sandy gravel
- sandy mud

- State Boundary
- County Boundary
- Town Boundary

0 750  
 Feet

Champlain Hudson Power Express Project  
 Champlain Hudson Power Express Inc.  
**Hudson River Project Route**  
 Sheet 28 of 43  
 Created: 6/18/2014  
 by: &



**LEGEND**

- 1 Hudson River Miles
- Potential Mattress (Rock or Stiff Soils)
- Potential Mattress (Utility Crossings)
- CHPE Route Mileposts
- Proposed CHPE Submarine Route HVDC
- Proposed CHPE Terrestrial Route HVDC
- Cofferdam
- Significant Coastal Fish and Wildlife Habitat
- Exclusion Zones (NYSDEC) (4 Zone Number)
- Contamination Site
- NMFS Identified Atlantic Sturgeon Habitat
- Submerged Aquatic Veg: Valsineria (NYSDEC)
- Submerged Aquatic Veg: Trappa (NYSDEC)

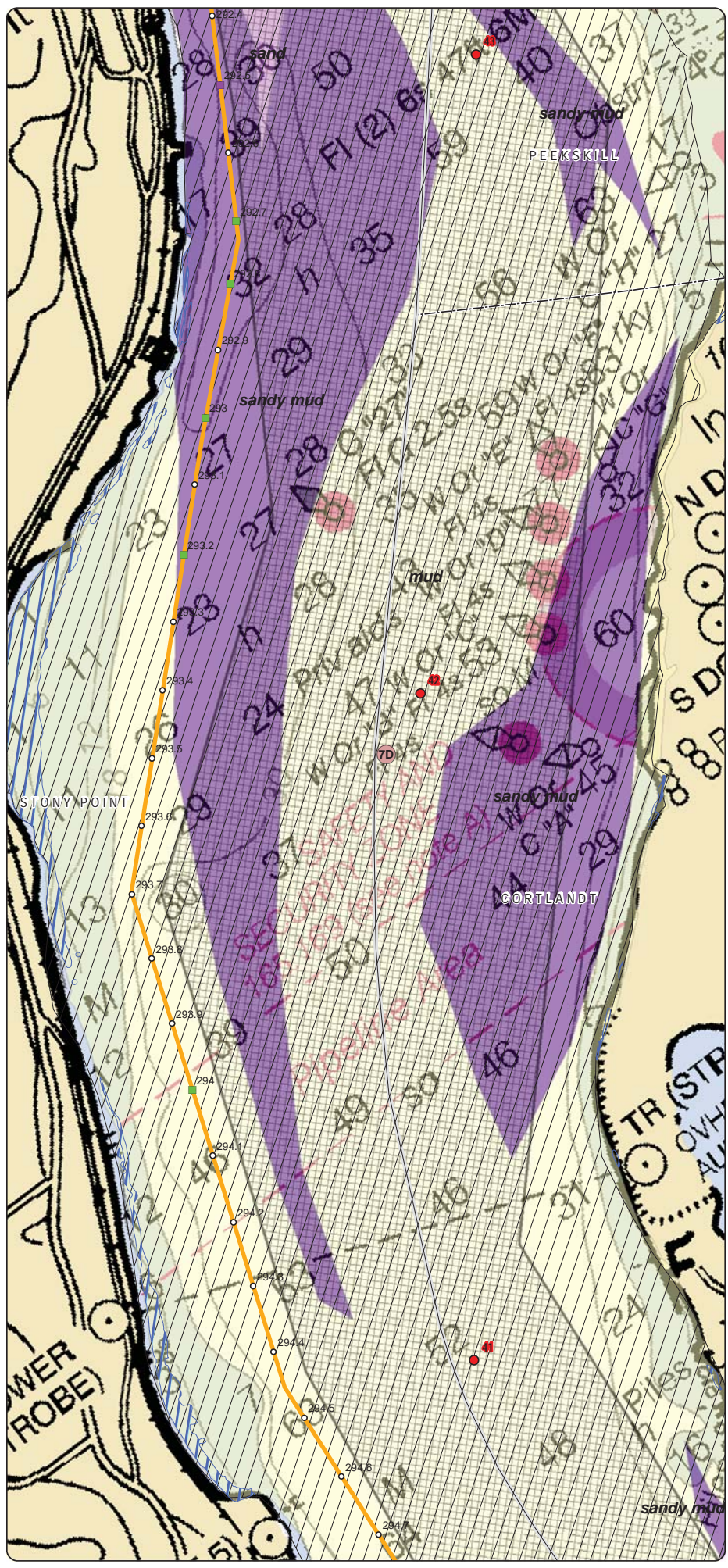
**Sediment Type - NYSDEC Hudson River Estuary Program**

- gravel
- gravelly mud
- gravelly sand
- mud
- muddy gravel
- muddy sand
- sand
- sandy gravel
- sandy mud

State Boundary  
 County Boundary  
 Town Boundary

0 750  
Feet

  
**Transmission**  
 Champlain Hudson Power Express Project  
 Champlain Hudson Power Express Inc.  
**Hudson River Project Route**  
 Sheet 29 of 43  
 Created: 6/18/2014  
 by: HTR & TRC



**LEGEND**

- 1 Hudson River Miles
- Potential Mattress (Rock or Stiff Soils)
- Potential Mattress (Utility Crossings)
- CHPE Route Mileposts
- Proposed CHPE Submarine Route HVDC
- Proposed CHPE Terrestrial Route HVDC
- Cofferdam
- Significant Coastal Fish and Wildlife Habitat
- Exclusion Zones (NYSDEC) (4) Zone Number
- Contamination Site
- NMFS Identified Atlantic Sturgeon Habitat
- Submerged Aquatic Veg: Valsineria (NYSDEC)
- Submerged Aquatic Veg: Trappa (NYSDEC)

**Sediment Type - NYSDEC Hudson River Estuary Program**

- gravel
- gravelly mud
- gravelly sand
- mud
- muddy gravel
- muddy sand
- sand
- sandy gravel
- sandy mud

- State Boundary
- County Boundary
- Town Boundary

0 750  
Feet

  
**Transmission**  
 Group  
 Champlain Hudson Power Express Project  
 Champlain Hudson Power Express Inc.  


---

**Hudson River**  
**Project Route**  
 Sheet 30 of 43  

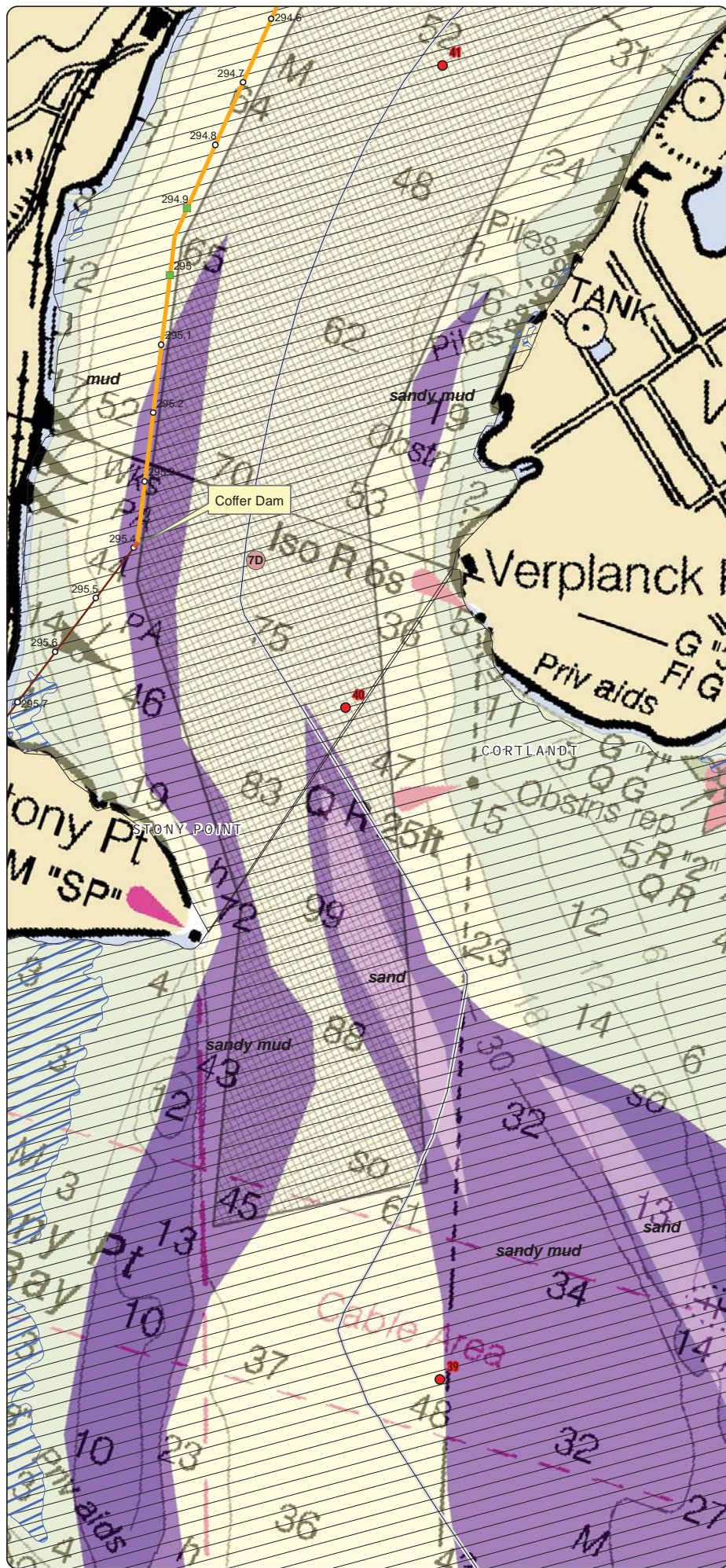

---

 Created: 6/18/2014  
 by:   & 

DATA SOURCES: ESRI, NYSDOT, NOAA, USACE, NY DOS, NY DEC, TDI, TRC

Note: Soundings are in feet. Please see NOAA website for details on chart symbology.

V:\PROJECT\SAUGUS\AVD\CHPE\Hudson\_River\_AMF\S\_06162014\_11417.mxd



**LEGEND**

- 1 Hudson River Miles
- Potential Mattress (Rock or Stiff Soils)
- Potential Mattress (Utility Crossings)
- CHPE Route Mileposts
- Proposed CHPE Submarine Route HVDC
- Proposed CHPE Terrestrial Route HVDC
- Coffer Dam
- Significant Coastal Fish and Wildlife Habitat
- Exclusion Zones (NYSDEC) (A) Zone Number
- Contamination Site
- NMFS Identified Atlantic Sturgeon Habitat
- Submerged Aquatic Veg: Valsineria (NYSDEC)
- Submerged Aquatic Veg: Trappa (NYSDEC)

**Sediment Type - NYSDEC Hudson River Estuary Program**

- gravel
- gravelly mud
- gravelly sand
- mud
- muddy gravel
- muddy sand
- sand
- sandy gravel
- sandy mud

- State Boundary
- County Boundary
- Town Boundary

0 750  
Feet

  
**Transmission**  
Corporation, Inc.

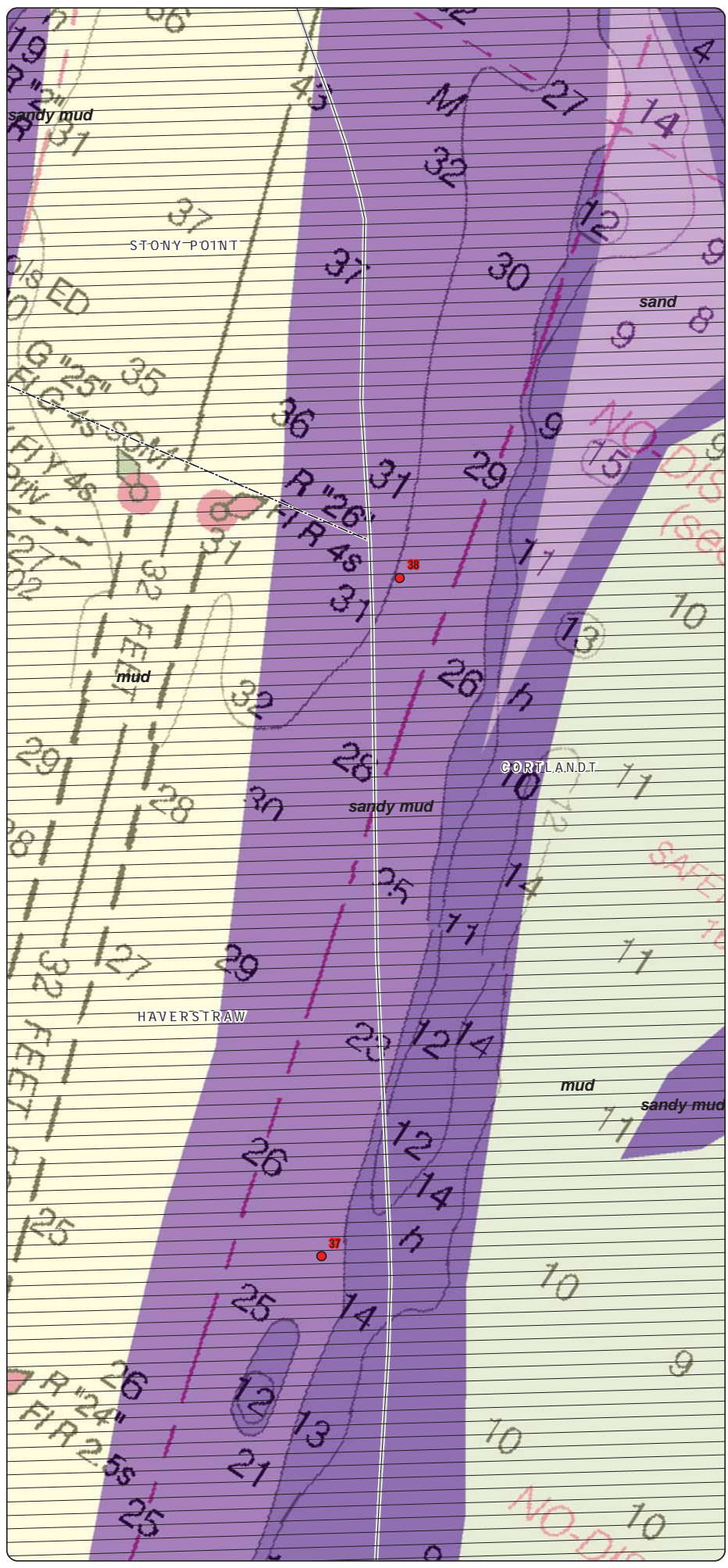
**Champlain Hudson Power Express Project**  
 Champlain Hudson Power Express Inc.

---

**Hudson River**  
**Project Route**  
 Sheet 31 of 43

---

Created: 6/18/2014  
 by:   & 



**LEGEND**

- 1 Hudson River Miles
- Potential Mattress (Rock or Stiff Soils)
- Potential Mattress (Utility Crossings)
- 1 CHPE Route Mileposts
- Proposed CHPE Submarine Route HVDC
- Proposed CHPE Terrestrial Route HVDC
- Cofferdam
- Significant Coastal Fish and Wildlife Habitat
- Exclusion Zones (NYSDEC) (A) Zone Number
- Contamination Site
- NMFS Identified Atlantic Sturgeon Habitat
- Submerged Aquatic Veg: Valsineria (NYSDEC)
- Submerged Aquatic Veg: Trappa (NYSDEC)

**Sediment Type - NYSDEC Hudson River Estuary Program**

- gravel
- gravelly mud
- gravelly sand
- mud
- muddy gravel
- muddy sand
- sand
- sandy gravel
- sandy mud
- State Boundary
- County Boundary
- Town Boundary

**Transmission**  
Construction Inc.

**Champlain Hudson Power Express Project**  
 Champlain Hudson Power Express Inc.

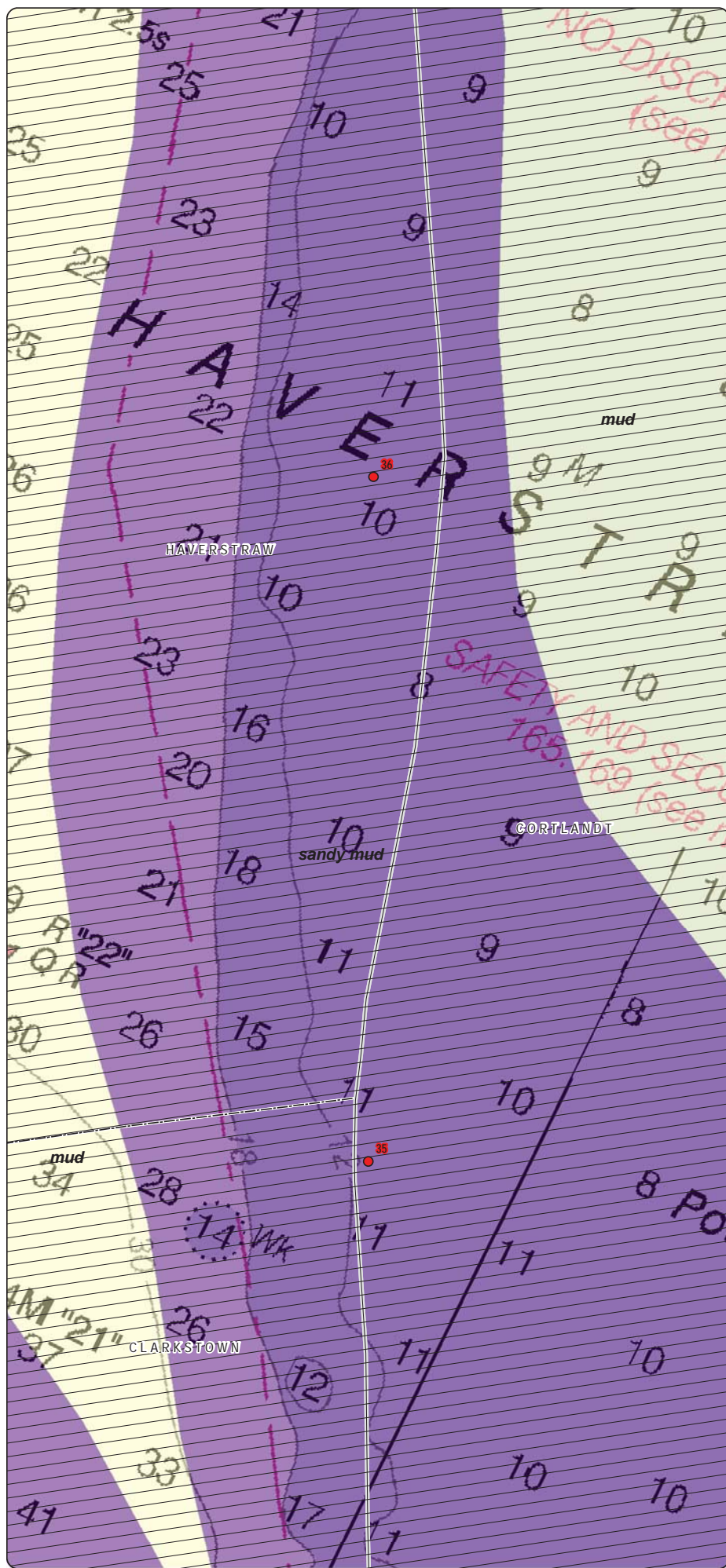
---

**Hudson River Project Route**  
 Sheet 32 of 43

---

Created: 6/18/2014  
 by: &





**LEGEND**

- 1 Hudson River Miles
- Potential Mattress (Rock or Stiff Soils)
- Potential Mattress (Utility Crossings)
- CHPE Route Mileposts
- Proposed CHPE Submarine Route HVDC
- Proposed CHPE Terrestrial Route HVDC
- Cofferdam
- Significant Coastal Fish and Wildlife Habitat
- Exclusion Zones (NYSDEC) (A) Zone Number
- Contamination Site
- NMFS Identified Atlantic Sturgeon Habitat
- Submerged Aquatic Veg: Valsineria (NYSDEC)
- Submerged Aquatic Veg: Trappa (NYSDEC)

**Sediment Type - NYSDEC Hudson River Estuary Program**

- gravel
- gravelly mud
- gravelly sand
- mud
- muddy gravel
- muddy sand
- sand
- sandy gravel
- sandy mud

- State Boundary
- County Boundary
- Town Boundary

0 750  
Feet

  
**Transmission**  
Corporations etc.

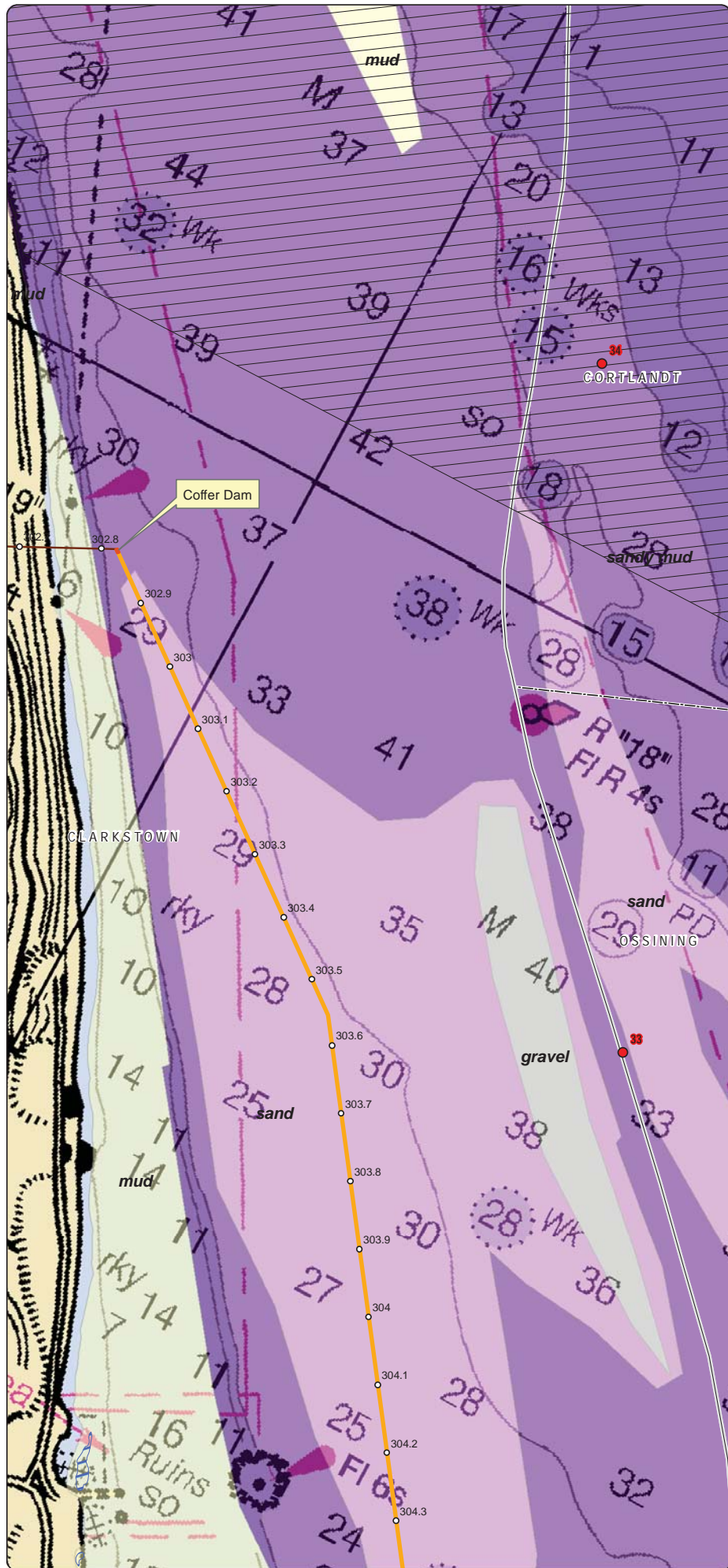
**Champlain Hudson Power Express Project**  
 Champlain Hudson Power Express Inc.

---

**Hudson River Project Route**  
 Sheet 33 of 43

---

Created: 6/18/2014  
 by:   & 



**LEGEND**

- 1 Hudson River Miles
- Potential Mattress (Rock or Stiff Soils)
- Potential Mattress (Utility Crossings)
- CHPE Route Mileposts
- Proposed CHPE Submarine Route HVDC
- Proposed CHPE Terrestrial Route HVDC
- Coffer Dam
- Significant Coastal Fish and Wildlife Habitat
- Exclusion Zones (NYSDEC) (A Zone Number)
- Contamination Site
- NMFS Identified Atlantic Sturgeon Habitat
- Submerged Aquatic Veg: Valsineria (NYSDEC)
- Submerged Aquatic Veg: Trappa (NYSDEC)

**Sediment Type - NYSDEC Hudson River Estuary Program**

- gravel
- gravelly mud
- gravelly sand
- mud
- muddy gravel
- muddy sand
- sand
- sandy gravel
- sandy mud

- State Boundary
- County Boundary
- Town Boundary

0 750  
Feet

  
**Transmission**  
Champlain Power Inc.

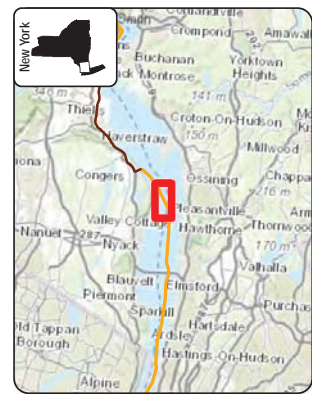
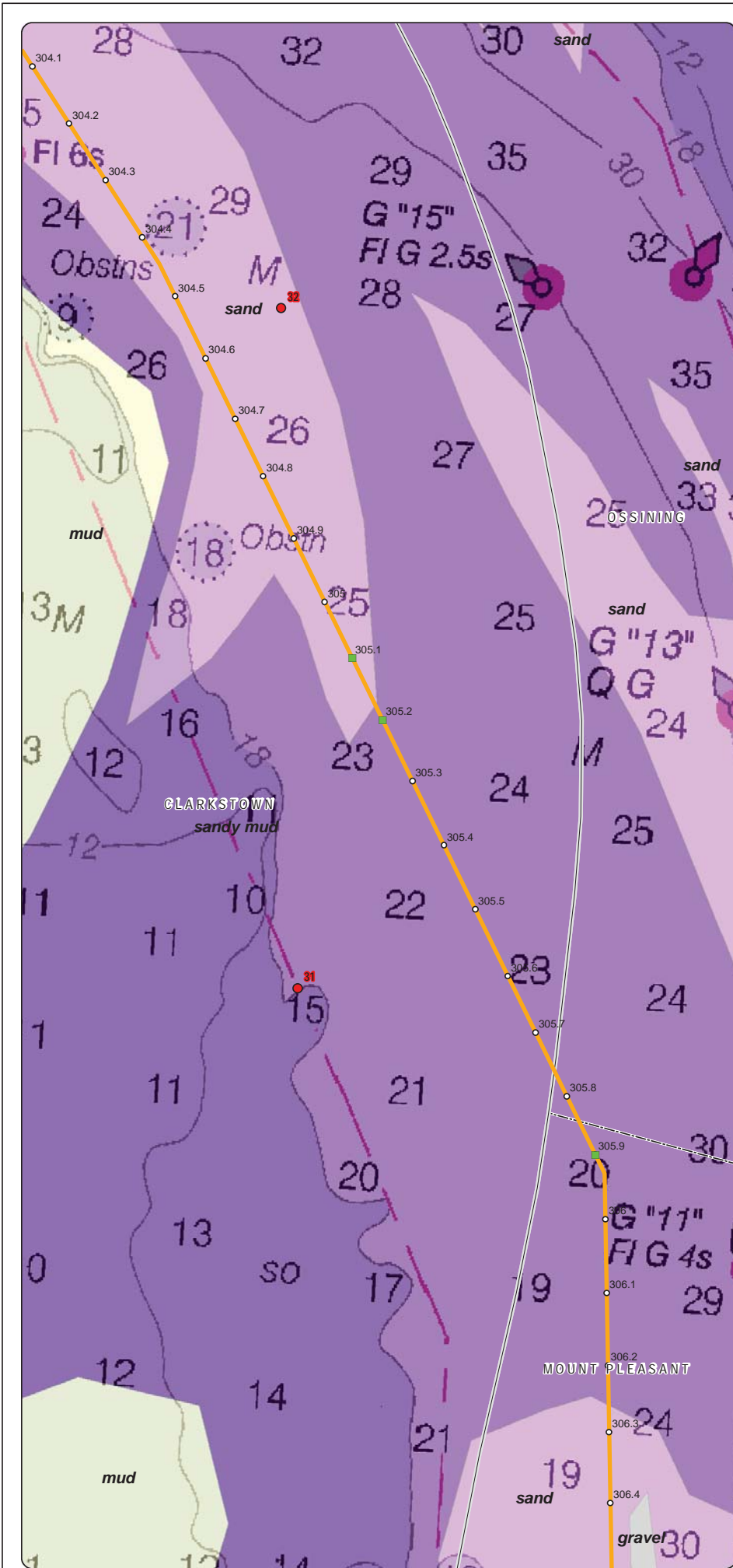
**Champlain Hudson Power Express Project**  
 Champlain Hudson Power Express Inc.

---

**Hudson River Project Route**  
 Sheet 34 of 43

---

Created: 6/18/2014  
 by:   & 



**LEGEND**

- 1 Hudson River Miles
- Potential Mattress (Rock or Stiff Soils)
- Potential Mattress (Utility Crossings)
- CHPE Route Mileposts
- Proposed CHPE Submarine Route HVDC
- Proposed CHPE Terrestrial Route HVDC
- Cofferdam
- Significant Coastal Fish and Wildlife Habitat
- Exclusion Zones (NYSDEC)  Zone Number
- Contamination Site
- NMFS Identified Atlantic Sturgeon Habitat
- Submerged Aquatic Veg: Valsineria (NYSDEC)
- Submerged Aquatic Veg: Trappa (NYSDEC)

**Sediment Type - NYSDEC Hudson River Estuary Program**

- gravel
- gravelly mud
- gravelly sand
- mud
- muddy gravel
- muddy sand
- sand
- sandy gravel
- sandy mud

- State Boundary
- County Boundary
- Town Boundary

0 750  
Feet

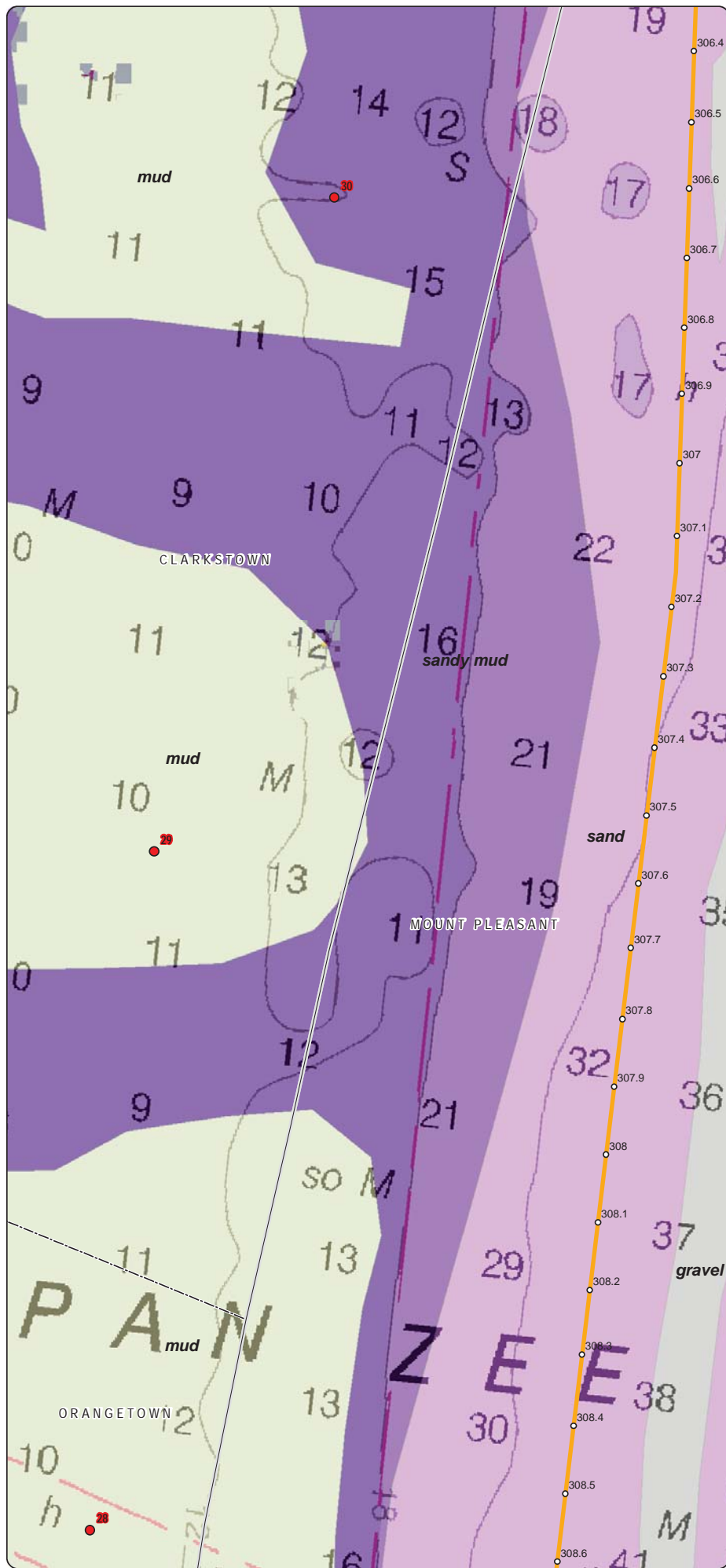
  
**Transmission**  
 Champlain Hudson Power Express Project  
 Champlain Hudson Power Express Inc.  


---

**Hudson River**  
**Project Route**  
 Sheet 35 of 43  


---

 Created: 6/18/2014  
 by: HTR & CTRC



**LEGEND**

- 1 Hudson River Miles
- Potential Mattress (Rock or Stiff Soils)
- Potential Mattress (Utility Crossings)
- CHPE Route Mileposts
- Proposed CHPE Submarine Route HVDC
- Proposed CHPE Terrestrial Route HVDC
- Cofferdam
- Significant Coastal Fish and Wildlife Habitat
- Exclusion Zones (NYSDEC) (A) Zone Number
- Contamination Site
- NMFS Identified Atlantic Sturgeon Habitat
- Submerged Aquatic Veg: Valsineria (NYSDEC)
- Submerged Aquatic Veg: Trappa (NYSDEC)

**Sediment Type - NYSDEC Hudson River Estuary Program**

- gravel
- gravelly mud
- gravelly sand
- mud
- muddy gravel
- muddy sand
- sand
- sandy gravel
- sandy mud

- State Boundary
- County Boundary
- Town Boundary

0 750  
Feet

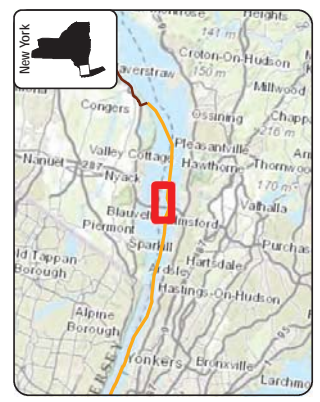
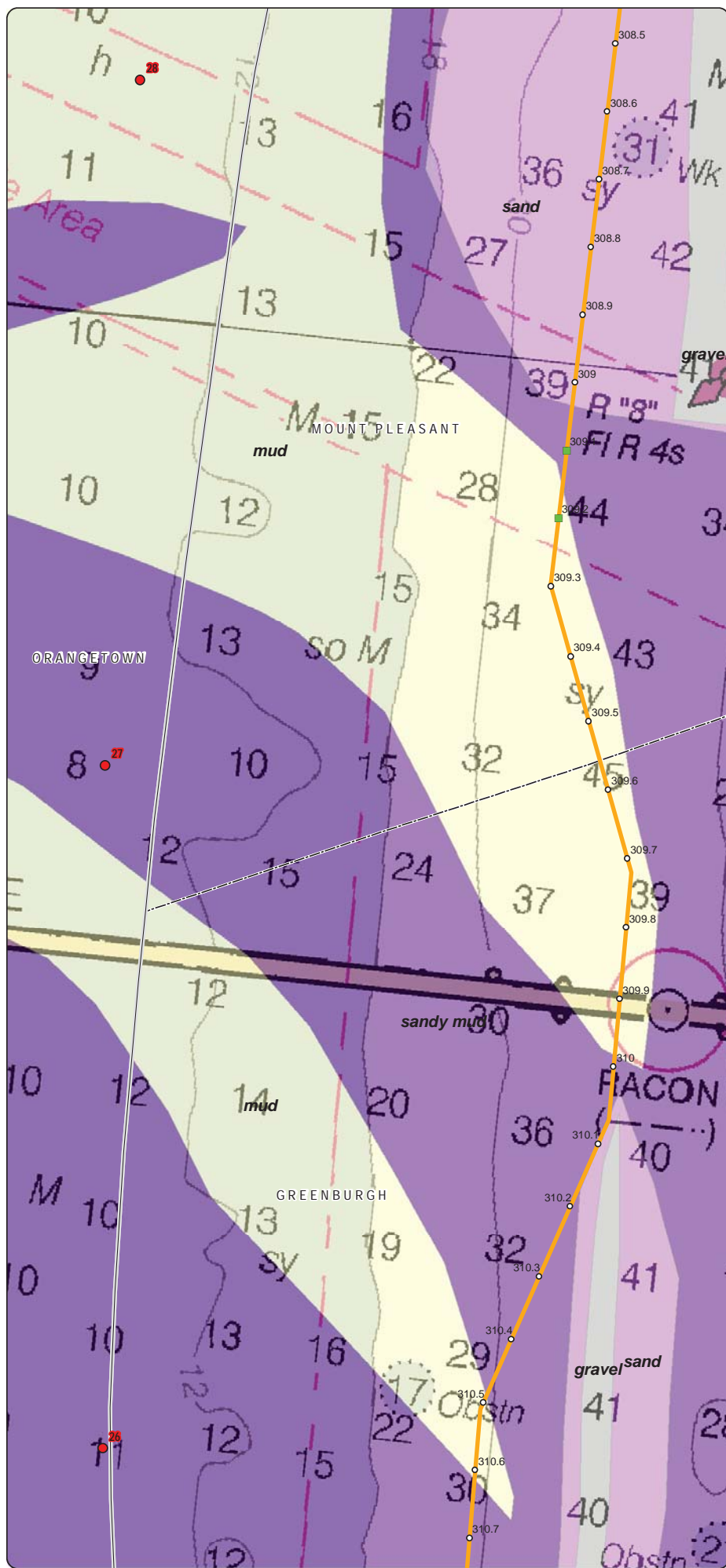
  
**Transmission**  
 Champlain Hudson Power Express Project  
 Champlain Hudson Power Express Inc.  


---

**Hudson River**  
**Project Route**  
 Sheet 36 of 43  


---

 Created: 6/18/2014  
 by: HTR & CTRC



**LEGEND**

- 1 Hudson River Miles
- Potential Mattress (Rock or Stiff Soils)
- Potential Mattress (Utility Crossings)
- CHPE Route Mileposts
- Proposed CHPE Submarine Route HVDC
- Proposed CHPE Terrestrial Route HVDC
- Cofferdam
- Significant Coastal Fish and Wildlife Habitat
- Exclusion Zones (NYSDEC) (A Zone Number)
- Contamination Site
- NMFS Identified Atlantic Sturgeon Habitat
- Submerged Aquatic Veg: Valsineria (NYSDEC)
- Submerged Aquatic Veg: Trappa (NYSDEC)

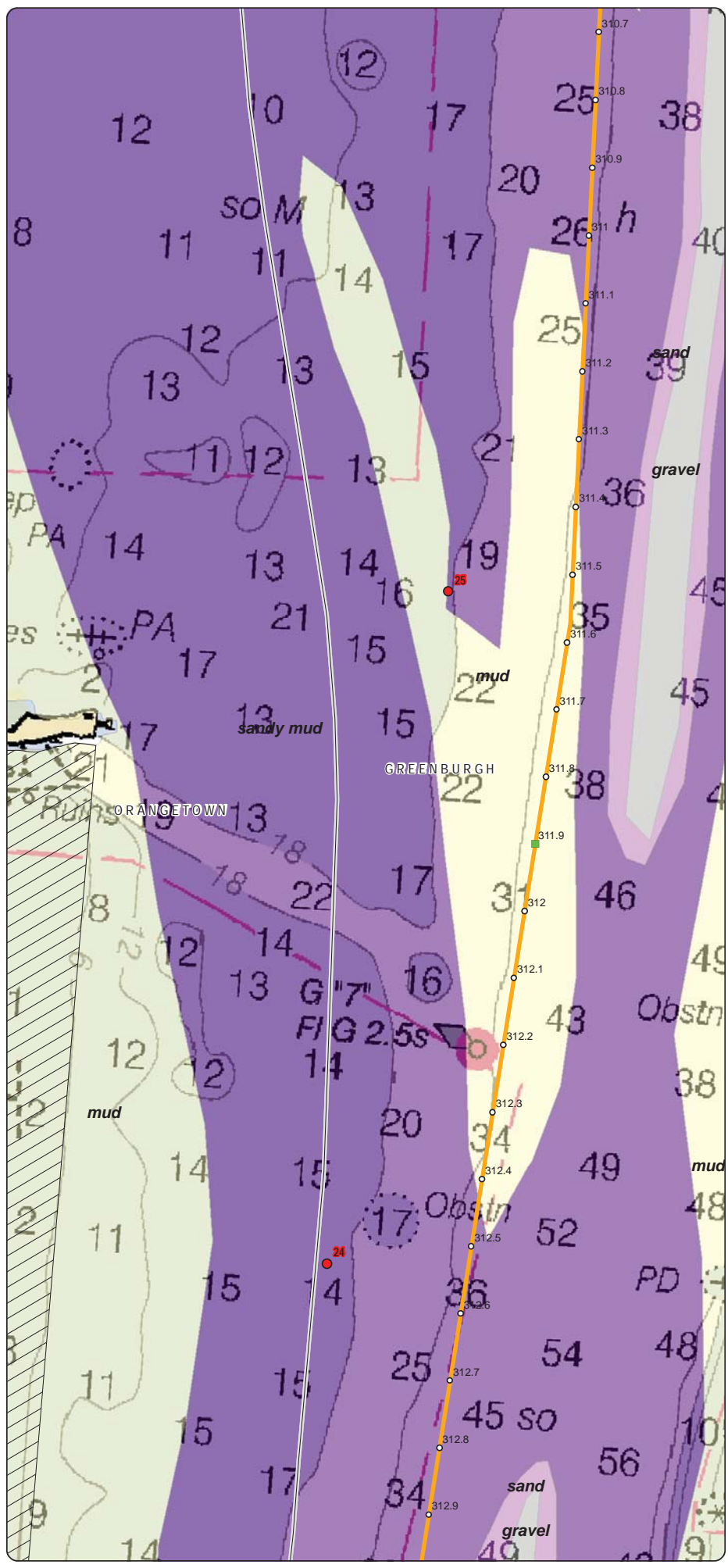
**Sediment Type - NYSDEC Hudson River Estuary Program**

- gravel
- gravelly mud
- gravelly sand
- mud
- muddy gravel
- muddy sand
- sand
- sandy gravel
- sandy mud

- State Boundary
- County Boundary
- Town Boundary

0 750  
Feet

  
 Transmission  
 Champlain Hudson Power Express Project  
 Champlain Hudson Power Express Inc.  
**Hudson River  
 Project Route**  
 Sheet 37 of 43  
 Created: 6/18/2014  
 by: HPR & CTRC



**LEGEND**

- 1 Hudson River Miles
- Potential Mattress (Rock or Stiff Soils)
- Potential Mattress (Utility Crossings)
- CHPE Route Mileposts
- Proposed CHPE Submarine Route HVDC
- Proposed CHPE Terrestrial Route HVDC
- Cofferdam
- Significant Coastal Fish and Wildlife Habitat
- Exclusion Zones (NYSDEC) (Zone Number)
- Contamination Site
- NMFS Identified Atlantic Sturgeon Habitat
- Submerged Aquatic Veg: Valsineria (NYSDEC)
- Submerged Aquatic Veg: Trappa (NYSDEC)

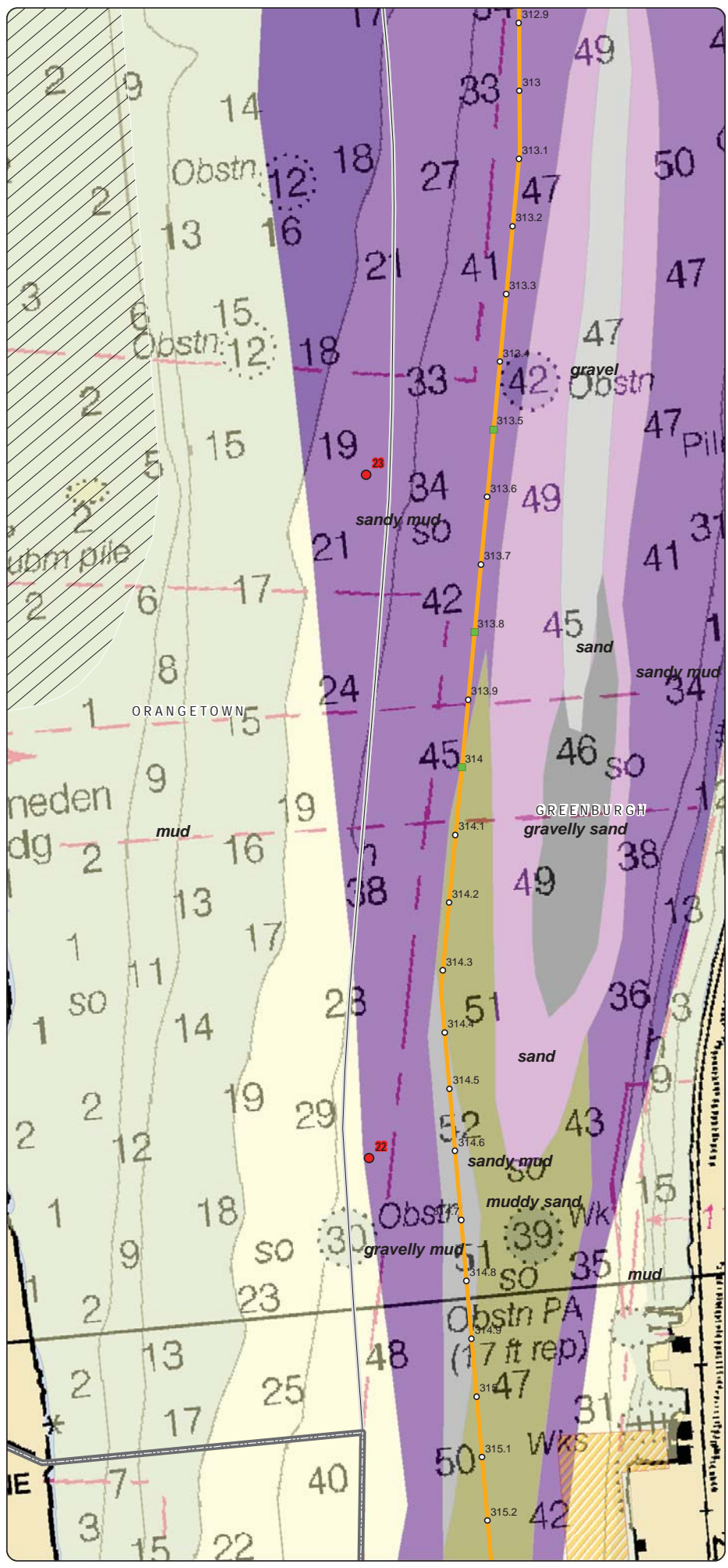
**Sediment Type - NYSDEC Hudson River Estuary Program**

- gravel
- gravelly mud
- gravelly sand
- mud
- muddy gravel
- muddy sand
- sand
- sandy gravel
- sandy mud

- State Boundary
- County Boundary
- Town Boundary

0 750  
Feet

  
 Champlain Hudson Power Express Project  
 Champlain Hudson Power Express Inc.  
**Hudson River Project Route**  
 Sheet 38 of 43  
 Created: 6/18/2014  
 by: HTR & CTRC



**LEGEND**

- 1 Hudson River Miles
- Potential Mattress (Rock or Stiff Soils)
- Potential Mattress (Utility Crossings)
- CHPE Route Mileposts
- Proposed CHPE Submarine Route HVDC
- Proposed CHPE Terrestrial Route HVDC
- Cofferdam
- Significant Coastal Fish and Wildlife Habitat
- Exclusion Zones (NYSDEC) (A) Zone Number
- Contamination Site
- NMFS Identified Atlantic Sturgeon Habitat
- Submerged Aquatic Veg: Valsineria (NYSDEC)
- Submerged Aquatic Veg: Trappa (NYSDEC)

**Sediment Type - NYSDEC Hudson River Estuary Program**

- gravel
- gravelly mud
- gravelly sand
- mud
- muddy gravel
- muddy sand
- sand
- sandy gravel
- sandy mud
- State Boundary
- County Boundary
- Town Boundary

0 750  
Feet

  
**Transmission**  
 Group, Inc.

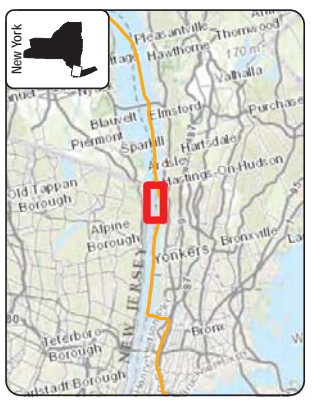
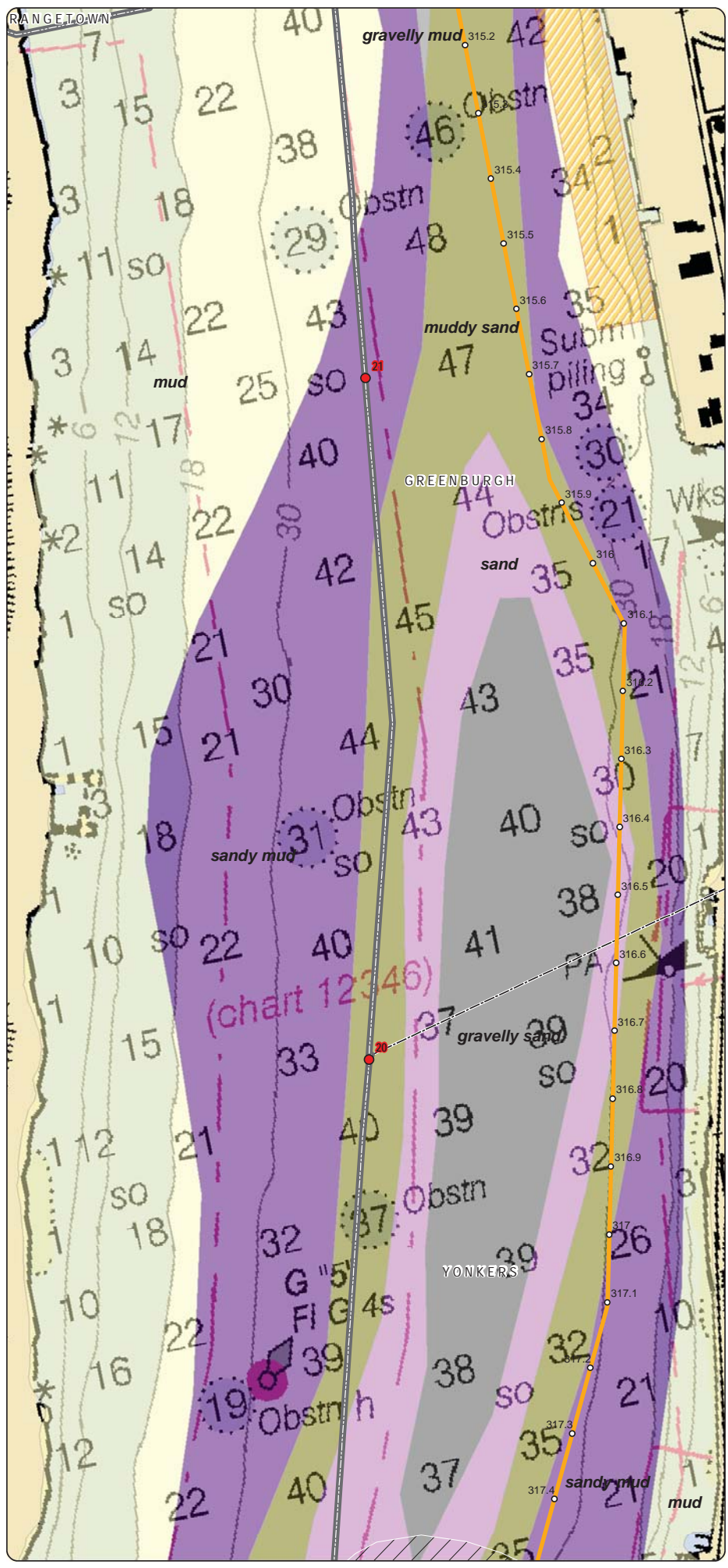
**Champlain Hudson Power Express Project**  
 Champlain Hudson Power Express Inc.

---

**Hudson River**  
**Project Route**  
 Sheet 39 of 43

---

Created: 6/18/2014  
 by:   & 



**LEGEND**

- 1 Hudson River Miles
- Potential Mattress (Rock or Stiff Soils)
- Potential Mattress (Utility Crossings)
- CHPE Route Mileposts
- Proposed CHPE Submarine Route HVDC
- Proposed CHPE Terrestrial Route HVDC
- Cofferdam
- Significant Coastal Fish and Wildlife Habitat
- Exclusion Zones (NYSDEC) (A) Zone Number
- Contamination Site
- NMFS Identified Atlantic Sturgeon Habitat
- Submerged Aquatic Veg: Valsineria (NYSDEC)
- Submerged Aquatic Veg: Trappa (NYSDEC)

**Sediment Type - NYSDEC Hudson River Estuary Program**

- gravel
- gravelly mud
- gravelly sand
- mud
- muddy gravel
- muddy sand
- sand
- sandy gravel
- sandy mud

- State Boundary
- County Boundary
- Town Boundary

0 750  
Feet

  
**Transmission**  
Construction, Inc.

**Champlain Hudson Power Express Project**  
 Champlain Hudson Power Express Inc.

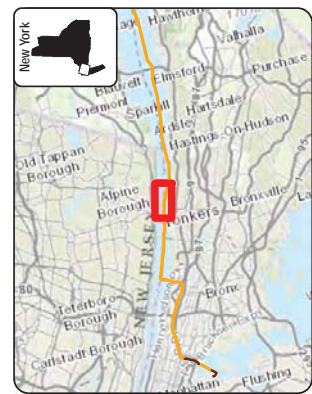
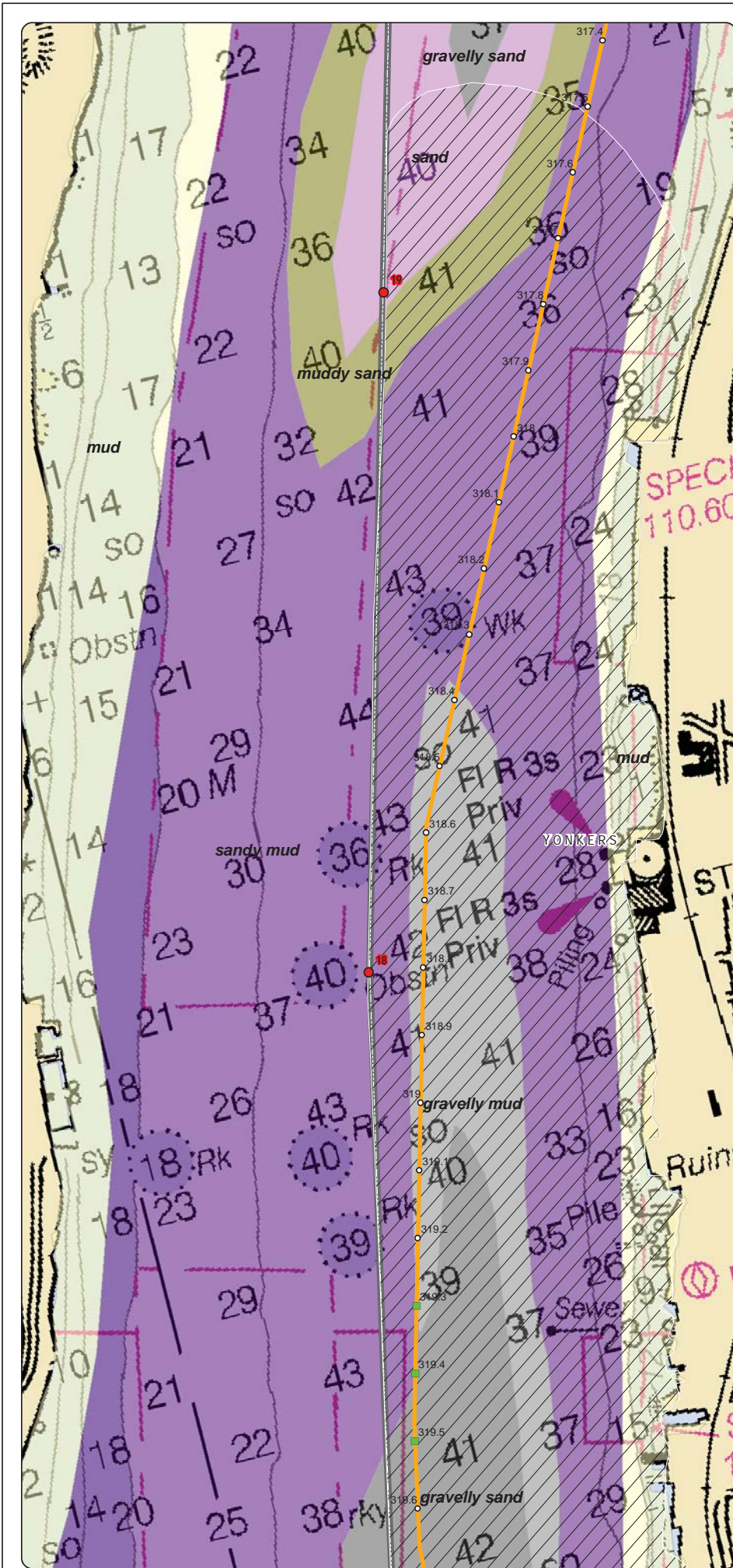
---

**Hudson River Project Route**  
 Sheet 40 of 43

---

Created: 6/18/2014  
 by:   & 





**LEGEND**

- 1 Hudson River Miles
- Potential Mattress (Rock or Stiff Soils)
- Potential Mattress (Utility Crossings)
- 1 CHPE Route Mileposts
- Proposed CHPE Submarine Route HVDC
- Proposed CHPE Terrestrial Route HVDC
- Cofferdam
- Significant Coastal Fish and Wildlife Habitat
- Exclusion Zones (NYSDEC) (Zone Number)
- Contamination Site
- NMFS Identified Atlantic Sturgeon Habitat
- Submerged Aquatic Veg: Valsineria (NYSDEC)
- Submerged Aquatic Veg: Trappa (NYSDEC)

**Sediment Type - NYSDEC Hudson River Estuary Program**

- gravel
- gravelly mud
- gravelly sand
- mud
- muddy gravel
- muddy sand
- sand
- sandy gravel
- sandy mud
- State Boundary
- County Boundary
- Town Boundary

0 750  
Feet

  
**Transmission**  
Champlain Power Inc.

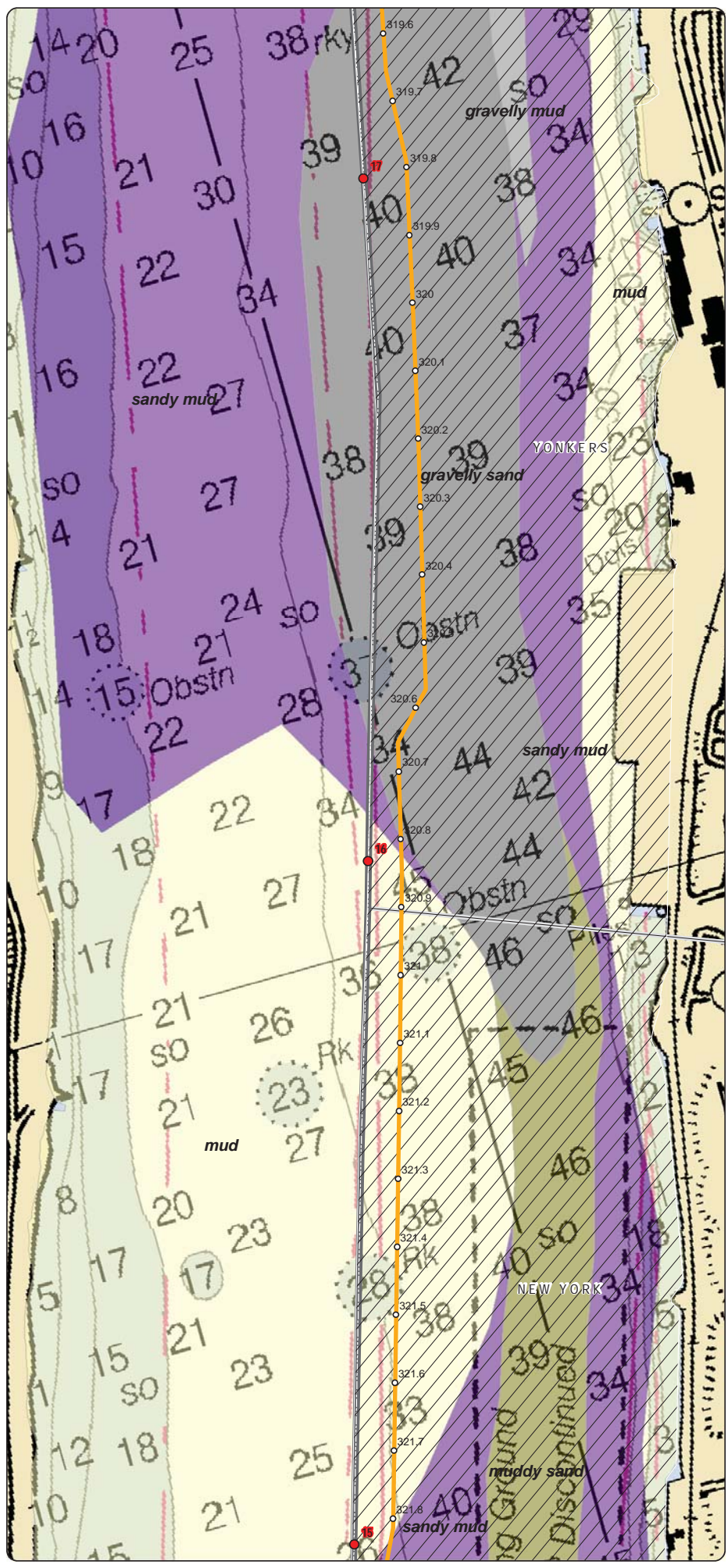
**Champlain Hudson Power Express Project**  
 Champlain Hudson Power Express Inc.

---

**Hudson River**  
**Project Route**  
 Sheet 41 of 43

---

Created: 6/18/2014  
 by:   & 



**LEGEND**

- 1 Hudson River Miles
- Potential Mattress (Rock or Stiff Soils)
- Potential Mattress (Utility Crossings)
- CHPE Route Mileposts
- Proposed CHPE Submarine Route HVDC
- Proposed CHPE Terrestrial Route HVDC
- Cofferdam
- Significant Coastal Fish and Wildlife Habitat
- Exclusion Zones (NYSDEC) (4) Zone Number
- Contamination Site
- NMFS Identified Atlantic Sturgeon Habitat
- Submerged Aquatic Veg: Valsineria (NYSDEC)
- Submerged Aquatic Veg: Trappa (NYSDEC)

**Sediment Type - NYSDEC Hudson River Estuary Program**

- gravel
- gravelly mud
- gravelly sand
- mud
- muddy gravel
- muddy sand
- sand
- sandy gravel
- sandy mud

- State Boundary
- County Boundary
- Town Boundary

0 750  
Feet

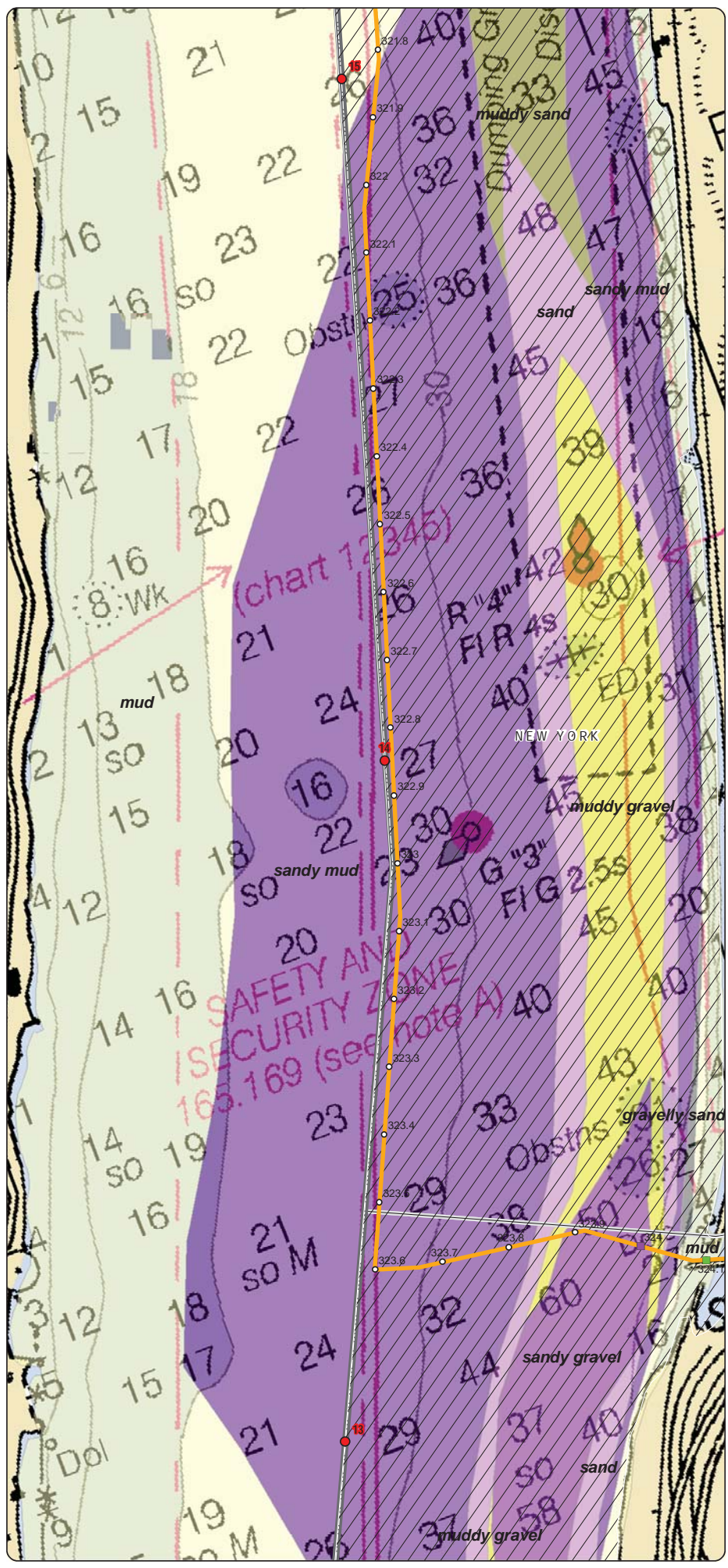
  
**Transmission**  
 Group  
 Champlain Hudson Power Express Project  
 Champlain Hudson Power Express Inc.

---

**Hudson River  
 Project Route**  
 Sheet 42 of 43

---

Created: 6/18/2014  
 by:   & 



**LEGEND**

- 1 Hudson River Miles
- Potential Mattress (Rock or Stiff Soils)
- Potential Mattress (Utility Crossings)
- CHPE Route Mileposts
- Proposed CHPE Submarine Route HVDC
- Proposed CHPE Terrestrial Route HVDC
- Cofferdam
- Significant Coastal Fish and Wildlife Habitat
- Exclusion Zones (NYSDEC) (Zone Number)
- Contamination Site
- NMFS Identified Atlantic Sturgeon Habitat
- Submerged Aquatic Veg: Valsineria (NYSDEC)
- Submerged Aquatic Veg: Trappa (NYSDEC)

**Sediment Type - NYSDEC Hudson River Estuary Program**

- gravel
- gravelly mud
- gravelly sand
- mud
- muddy gravel
- muddy sand
- sand
- sandy gravel
- sandy mud

State Boundary  
 County Boundary  
 Town Boundary

0 750  
 Feet

**Transmission**  
 Group, Inc.

**Champlain Hudson Power Express Project**  
 Champlain Hudson Power Express Inc.

---

**Hudson River**  
**Project Route**  
 Sheet 43 of 43

---

Created: 6/18/2014  
 by: HPR & TRC

***THIS PAGE INTENTIONALLY LEFT BLANK***